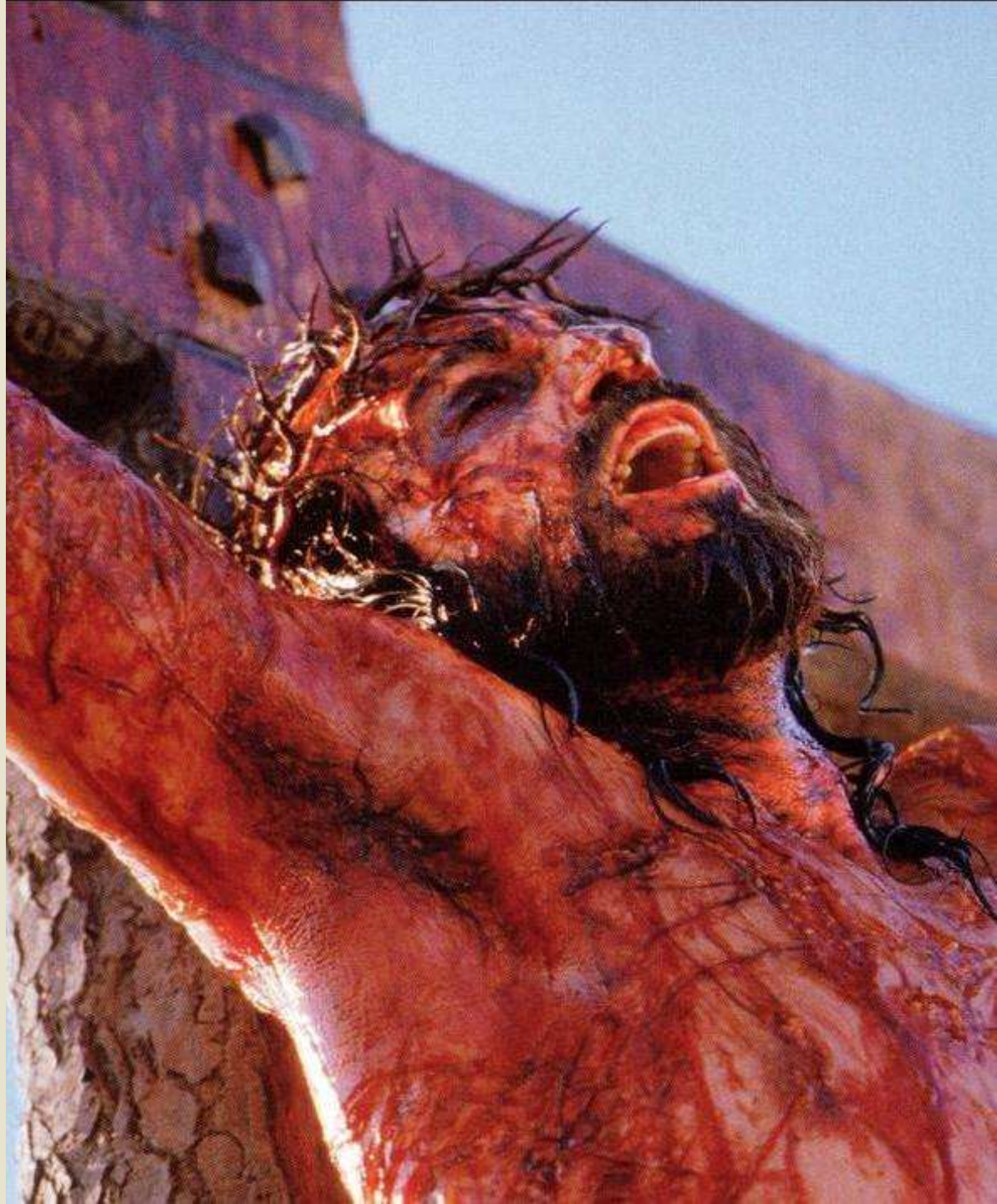


# THE DEATH OF JESUS

- “... we preach Christ crucified, to the Jews a stumbling block and to the Greeks foolishness, but to those who are called, both Jews and Greeks, Christ the power of God and the wisdom of God.”

I Corinthians 1:23-24



## THE DEATH OF JESUS ...

- was according to the determined counsel and foreknowledge of God.
- was a consequence of man's hatred of His righteous conduct.
- was the precise fulfillment of prophecy.
- involved inexpressible anguish and suffering.
- acquired precious blessings for His brethren.

# THE PLAN OF GOD

- Justice required punishment for sin.
- Man's sin, separation, redemption, and reconciliation were foreseen by God before the foundation of the world.
- God's mercy permitted a substitution.
- God's grace provided a sacrifice for sin.

# TYPES AND PROPHECIES

- Historical types foreshadowed details of His death, for example ...
  - The offering of Isaac - Genesis 22
  - Joseph's imprisonment - Genesis 39-41
  - Jonah and the "whale" - Jonah 1,2
- Predictive prophecy provided minute details of His death centuries earlier.
  - Isaiah 53: 1-12 - The Suffering Servant
  - Psalms 22: 1-21 - Psalm of the Cross



## THE LIFE OF CHRIST

- The righteous life of Jesus both qualified Him as a suitable Substitute, and alienated Him from worldly men.
- The world did not love Jesus because they did not love the Father.
- Jesus' zeal for His Father, made powerful enemies among the people of Israel.
- His disciples have, and will, similarly face persecution.





# THE ANGUISH OF ANTICIPATION

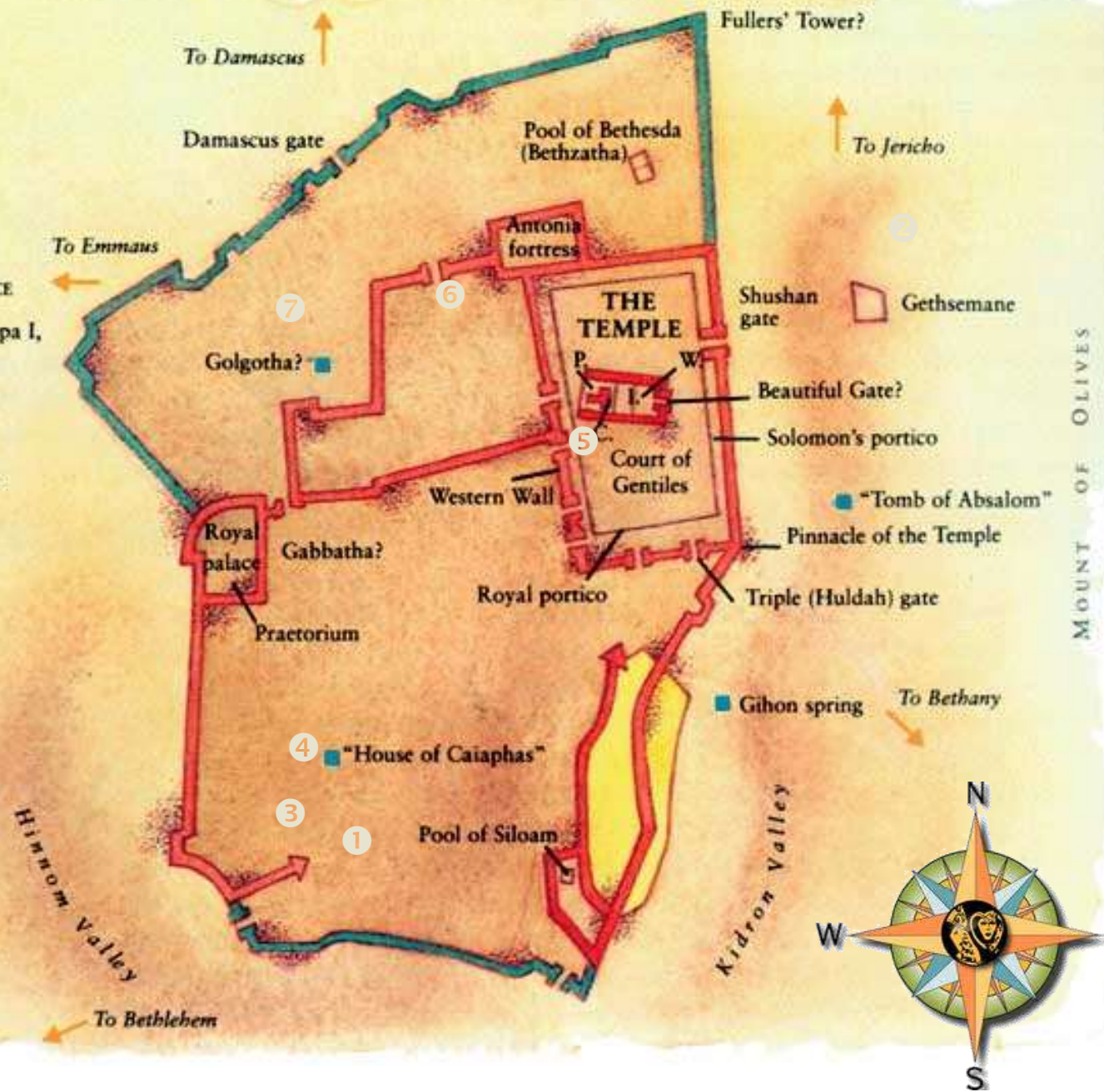
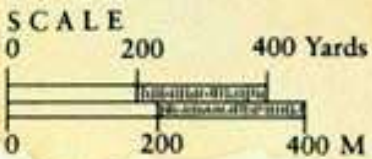
- Divine knowledge multiplied the anguish prior to the event.
  - His betrayal by Judas
  - The abandonment of His disciples
  - The impending denial of Peter
  - The incomprehensible suffering of the crucifixion
- All these contributed to His extreme agony
- Sweating great drops of blood
  - Medical authorities suggest this was not tears, or sweat but a rare condition called Hematohidrosis observed in cases of extreme emotional distress.

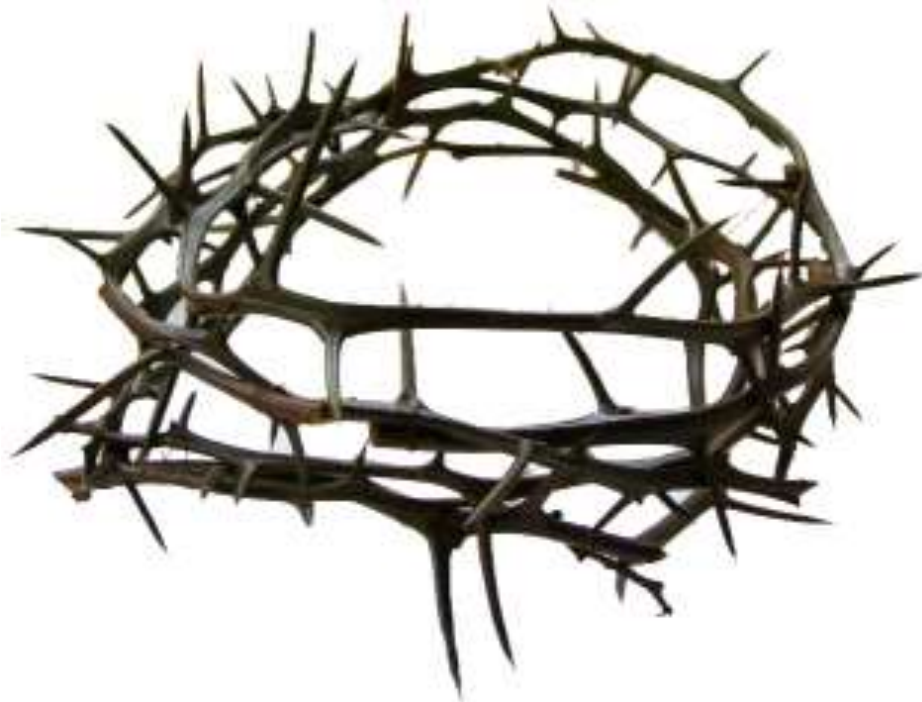


# Jerusalem in the early first century CE

## KEY

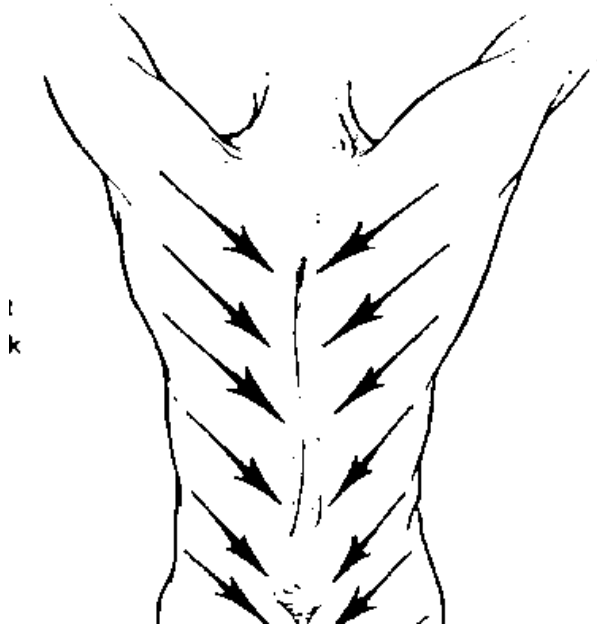
-  City wall in the time of Jesus, ca. 30 CE
  -  City wall added by King Herod Agrippa I, 41-44 CE
  -  City or Temple gate
  -  Area of King David's city, ca. 975 BCE
- 
- C. Central sanctuary
  - I. Court of Israel
  - P. Court of Priests
  - W. Court of Women



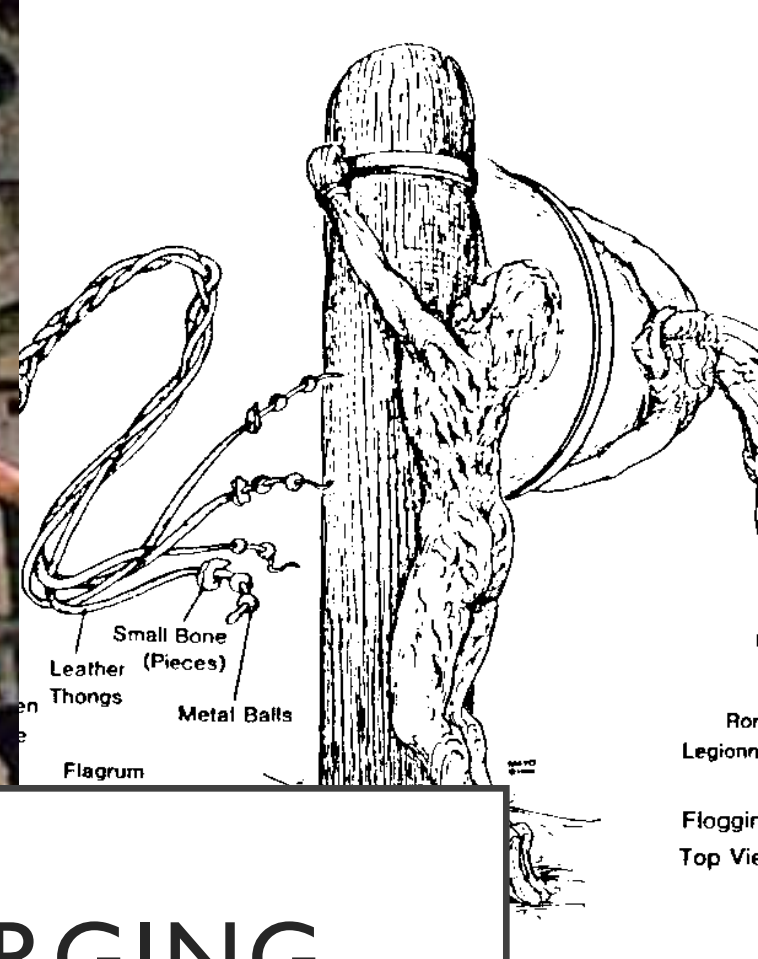


CROWN  
OF  
THORNS





ROMAN  
SCOURGING



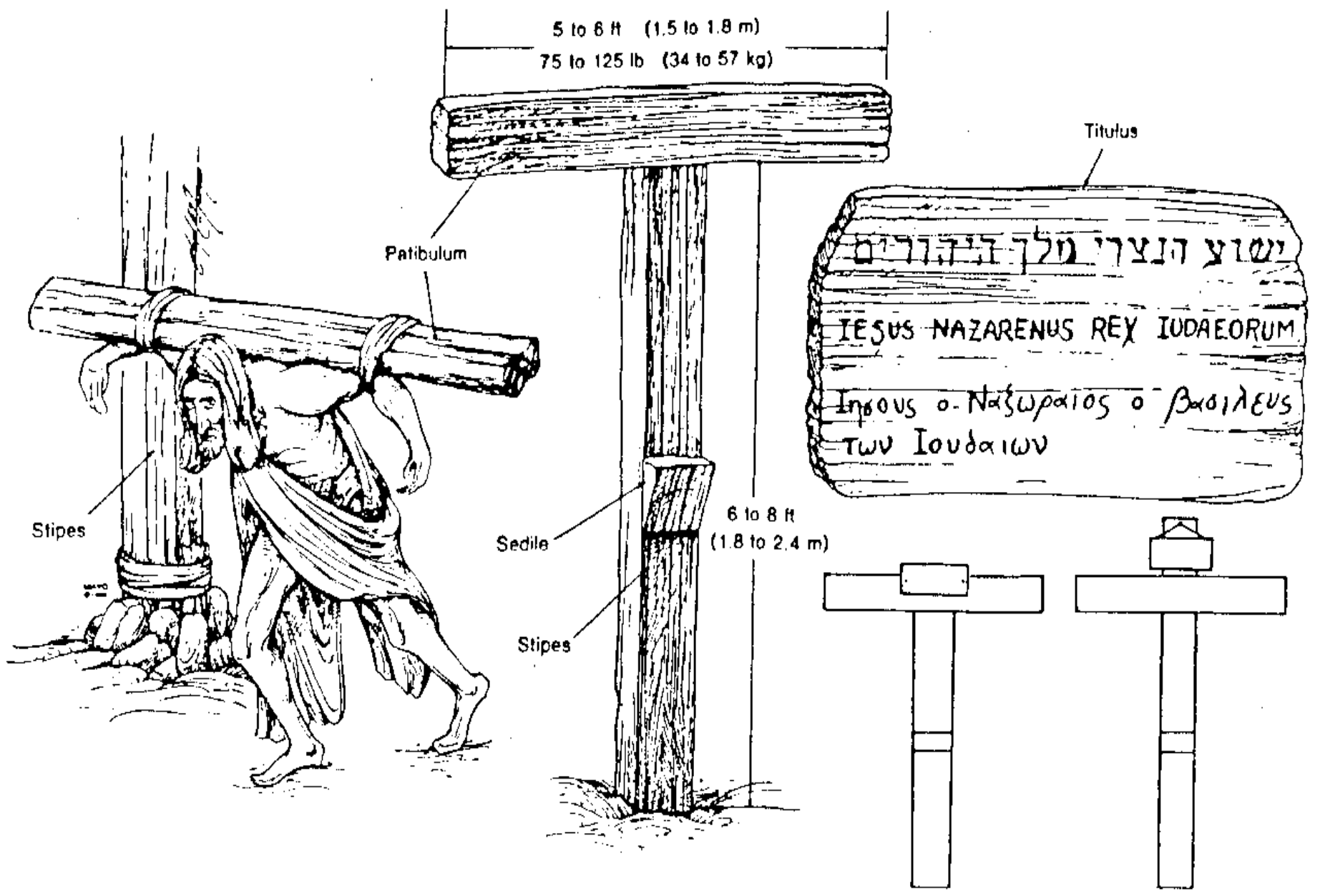
# ROMAN SCOURGING







# BEARING THE CROSS







PLACEMENT OF NAILS

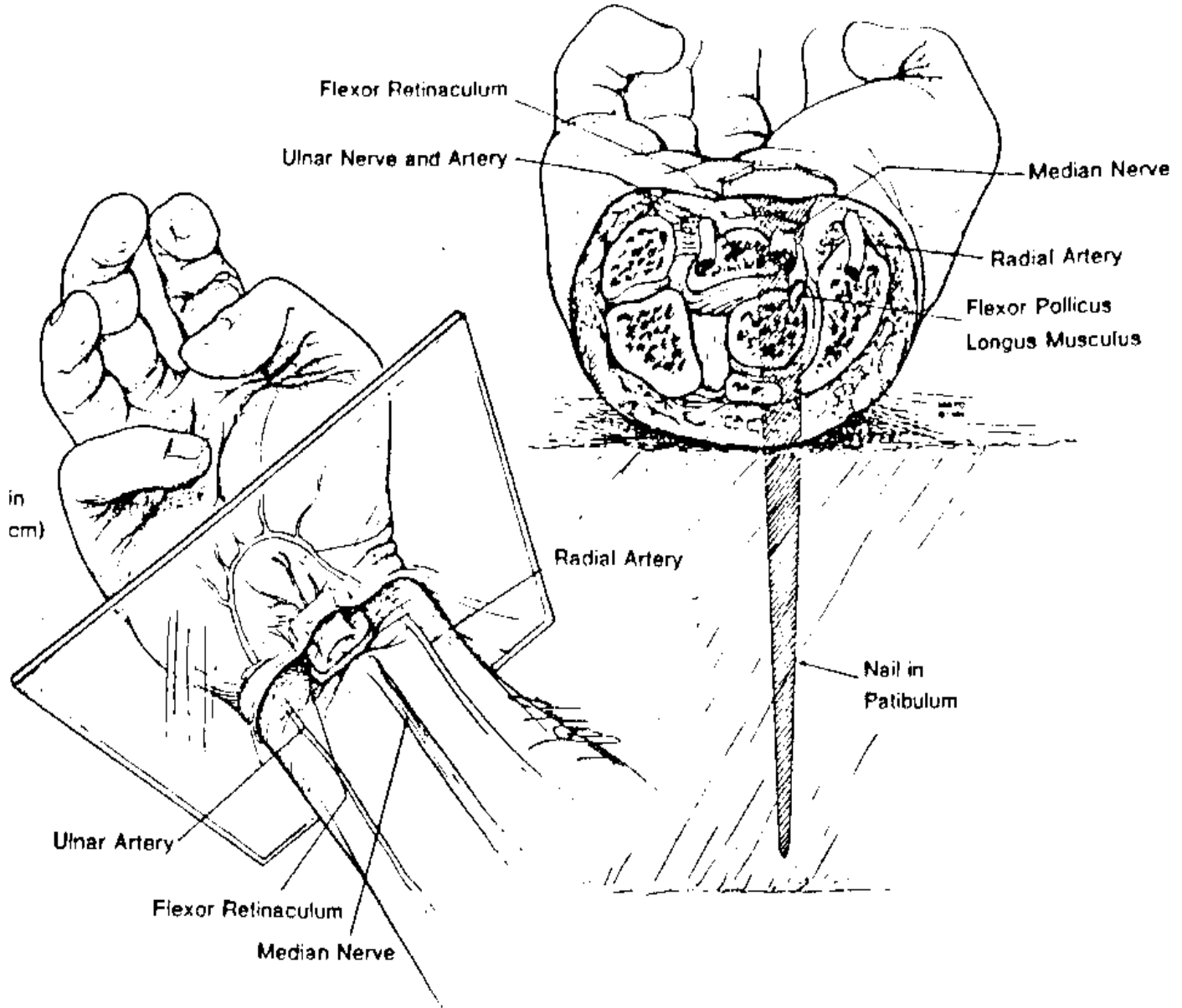
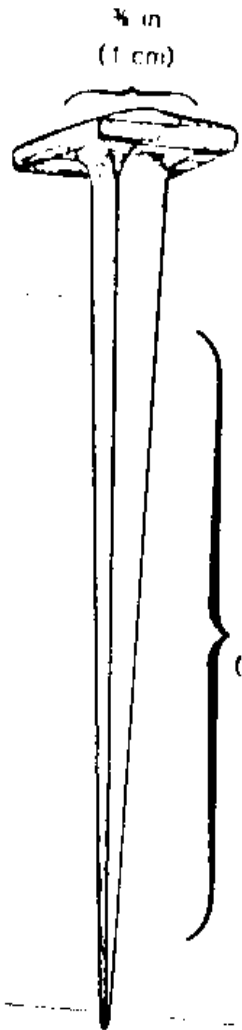
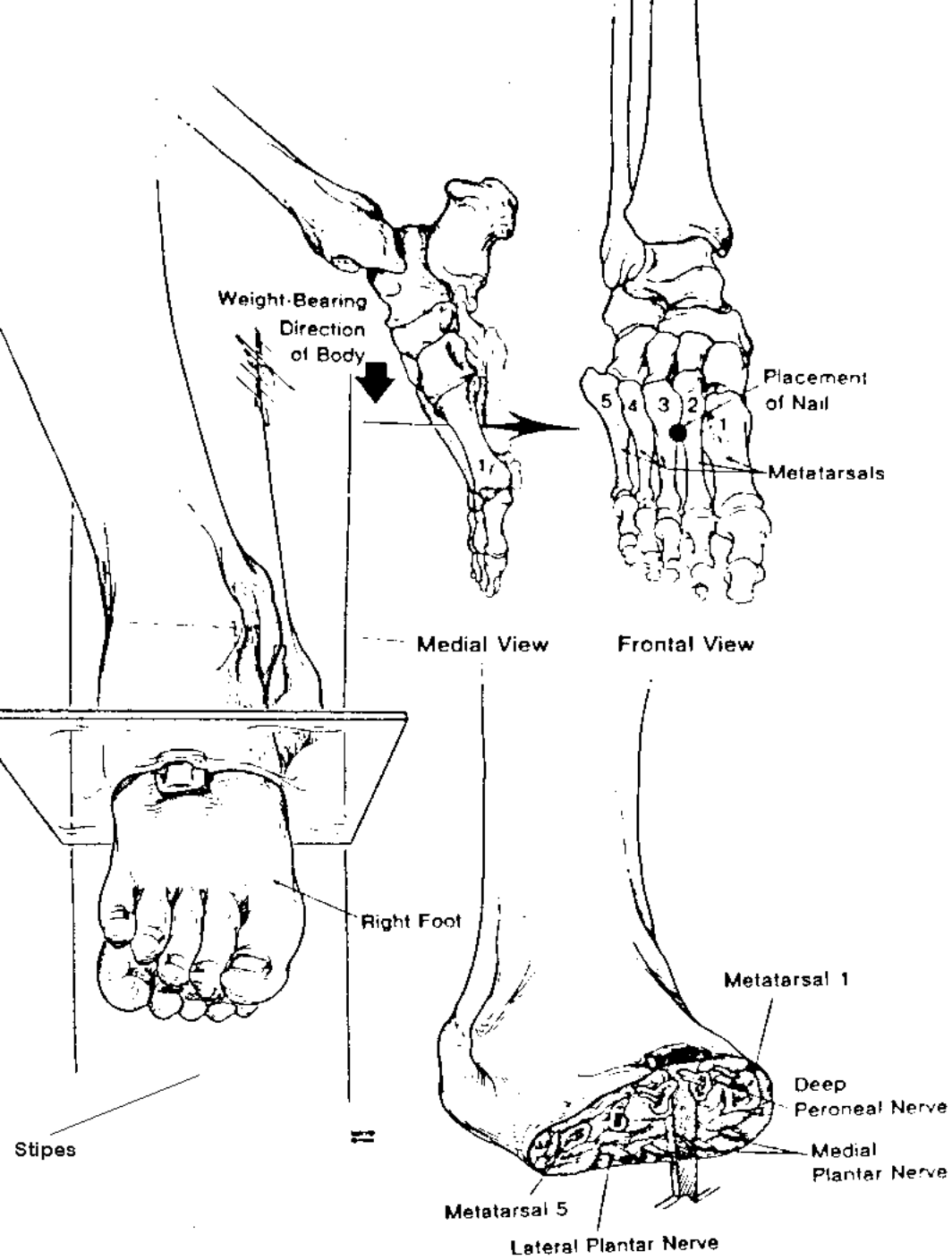


Illustration Copyright © JAMA, March 16, 1986

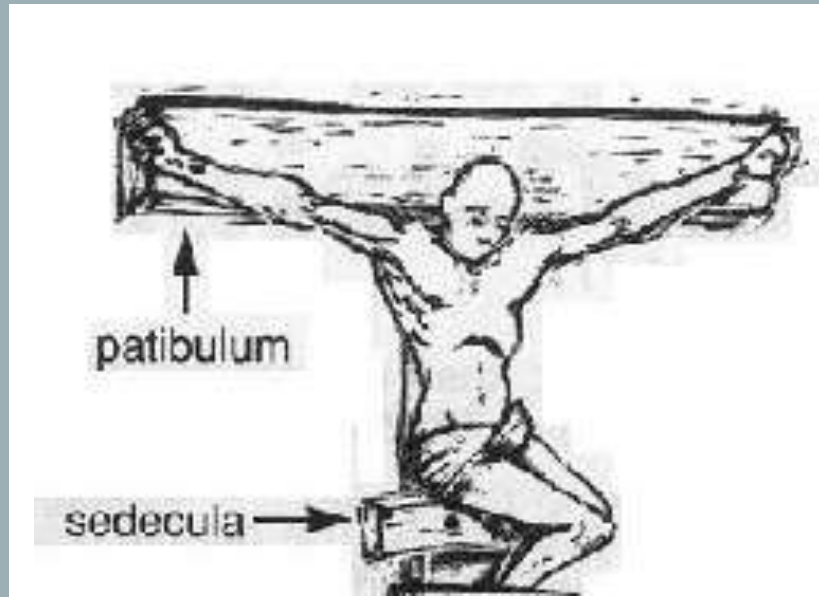


**Illustration Copyright © JAMA, March 16, 1986**









POSITION OF CRUCIFIXION

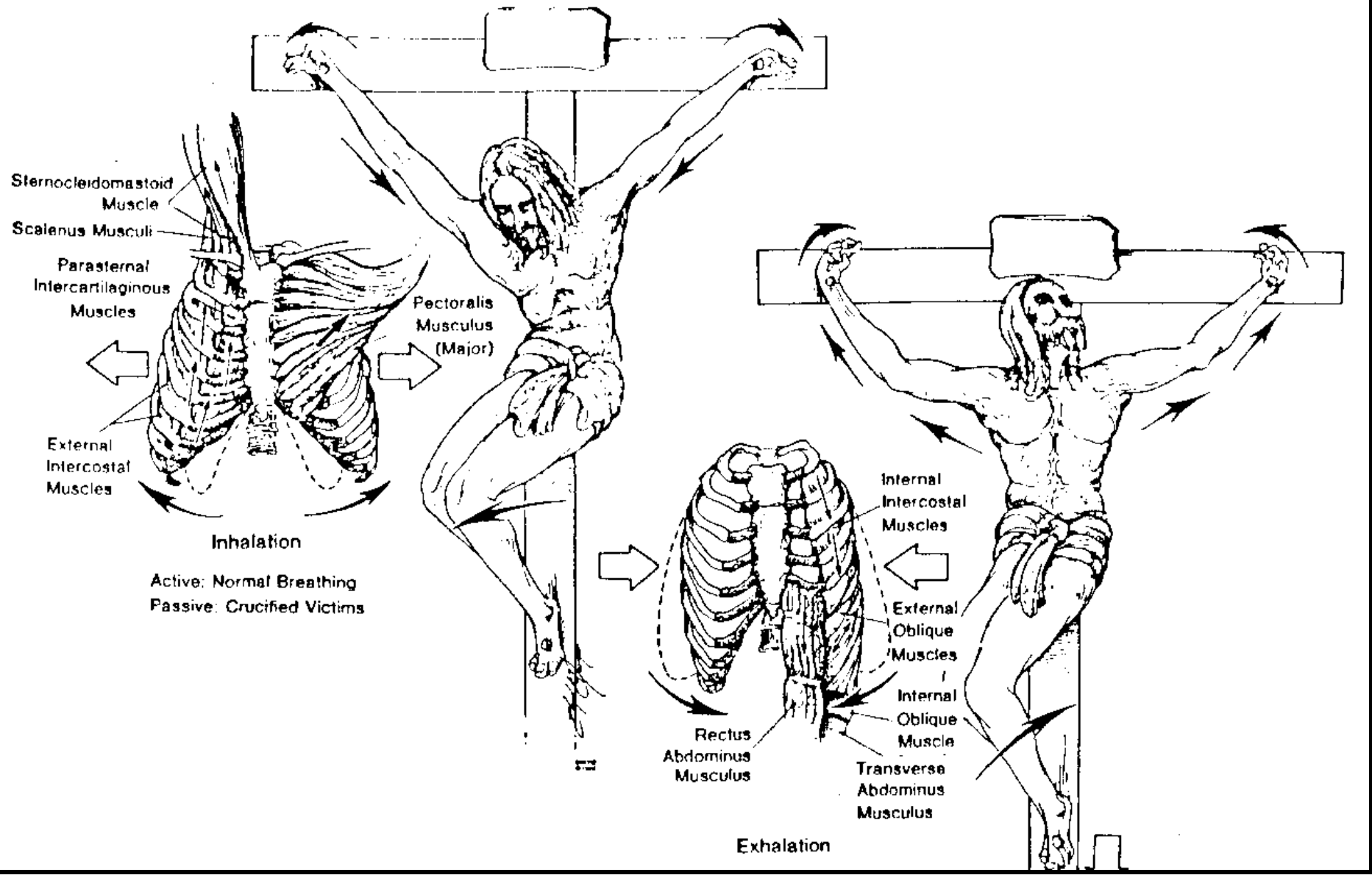
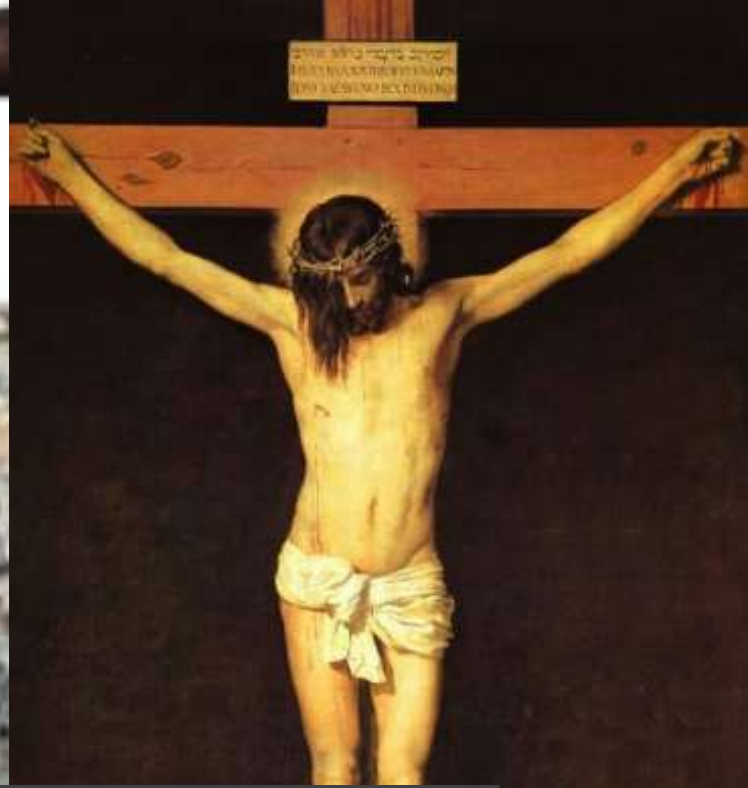
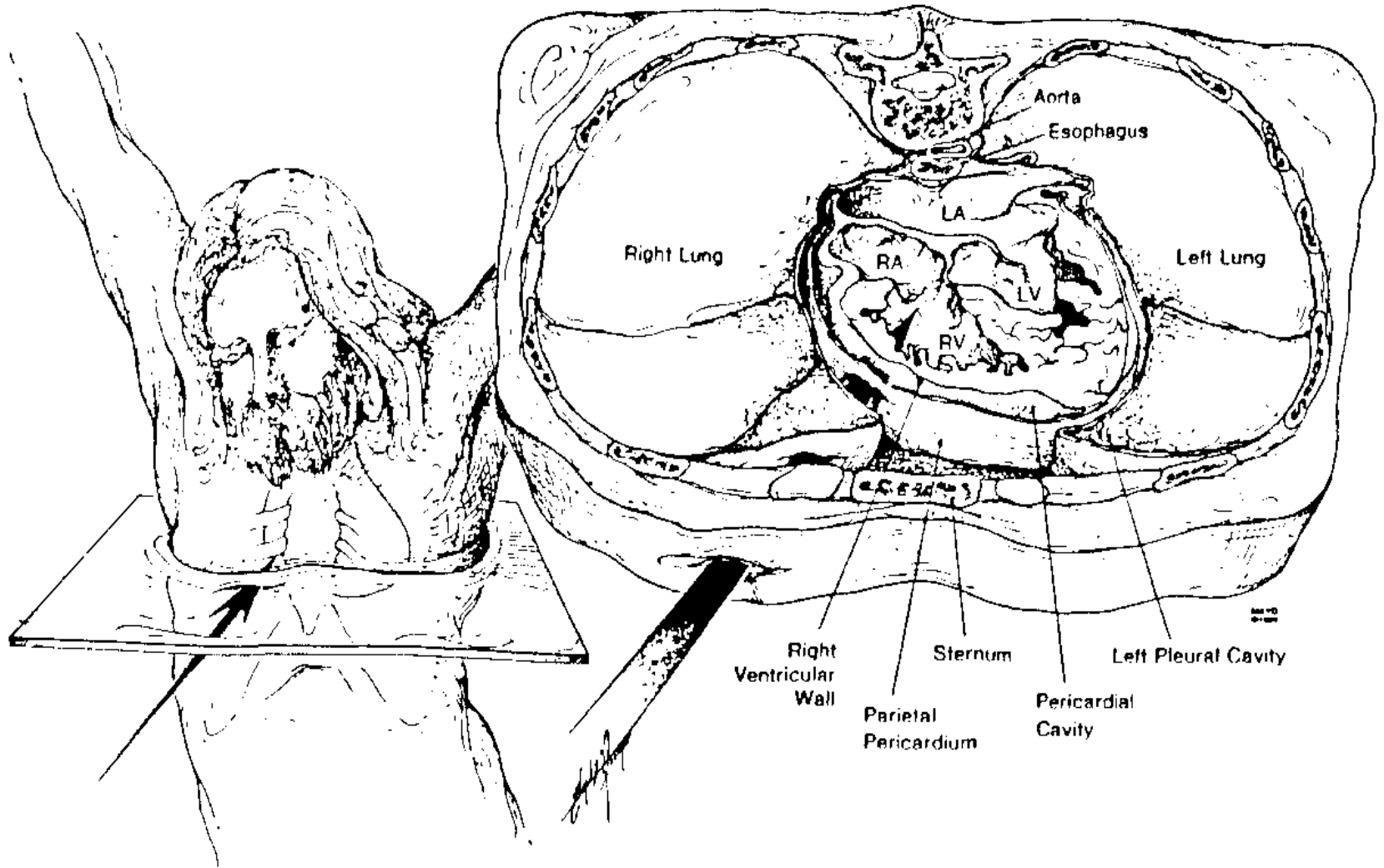


Illustration Copyright © JAMA, March 16, 1986



ARTISTIC RENDERING



# THE BLESSINGS IT PROVIDED

- Reconciliation to God – Romans 5
- Freedom from sin – Romans 6
- Redemption from death – Romans 6
- Atonement for punishment – Isaiah 53
- Confidence over death – Revelation 2:8-11



## ONLY THE BEGINNING ...

- The death of Jesus is not the end of the “story”...
- His death is *most* significant because of the events that followed.
- His enemies believed they had silenced Him forever... **they were wrong!**
- God had other plans! - Psalm 2; Acts 2:32,33