



**Praise Him, Praise Him!**  
**(Sacred Selections #11)**  
**Revelation 5**

# Praise Him, Praise Him!

**Fanny J. Crosby**

**1820 - 1915**



**Lyricist**

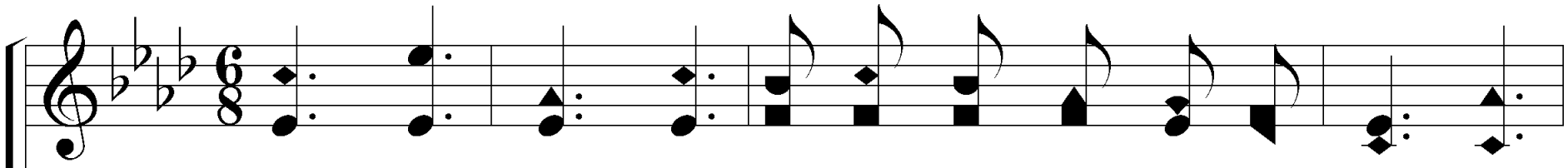
**Charles G. Allen**

**1838 - 1878**



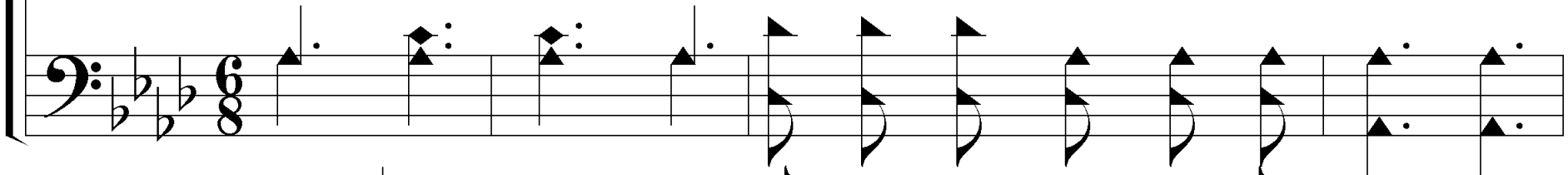
**Composer**

# 1 – Praise Him! Praise Him!

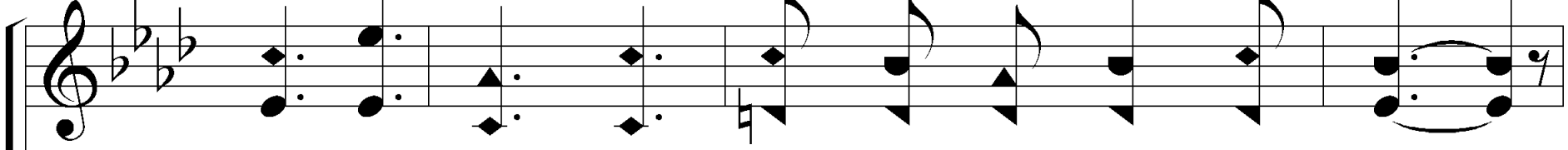


Musical notation for the first system, treble clef, 6/8 time signature. The melody consists of a series of eighth and quarter notes, starting with a dotted quarter note on G4, followed by eighth notes on A4, B4, C5, D5, E5, F5, G5, and ending with a dotted quarter note on G5.

Praise Him! praise Him! Je-sus, our bless-ed Re-deem-er!

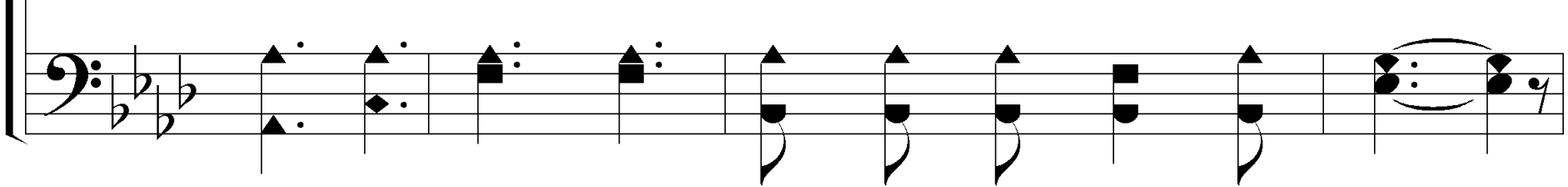


Musical notation for the first system, bass clef, 6/8 time signature. The bass line consists of quarter notes on G3, A3, B3, C4, D4, E4, F4, G4, and ending with a dotted quarter note on G4.



Musical notation for the second system, treble clef, 6/8 time signature. The melody continues with a dotted quarter note on G4, followed by eighth notes on A4, B4, C5, D5, E5, F5, G5, and ends with a dotted quarter note on G5.

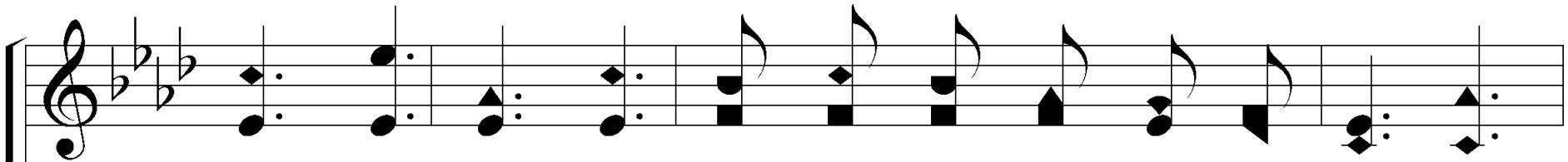
Sing, O Earth, His won-der-ful love pro-claim!



Musical notation for the second system, bass clef, 6/8 time signature. The bass line continues with quarter notes on G3, A3, B3, C4, D4, E4, F4, G4, and ends with a dotted quarter note on G4.

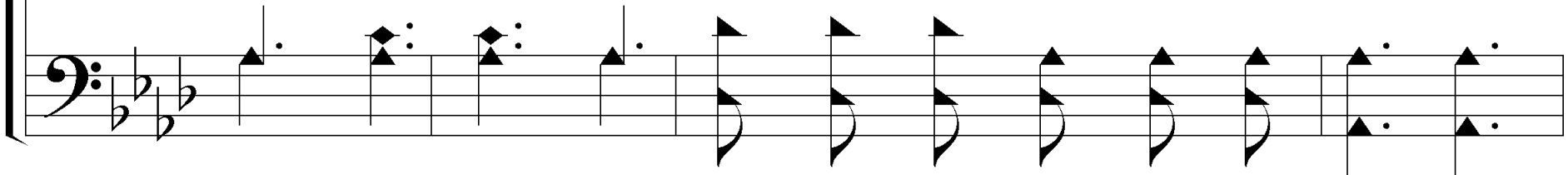
Words by: Fanny J. Crosby  
Music by: Chester G. Allen

# 1 – Praise Him! Praise Him!

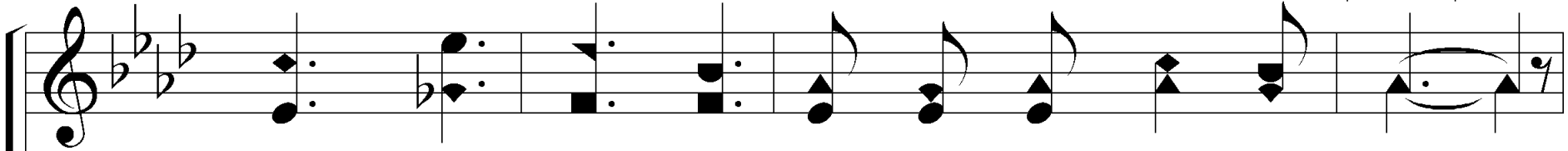


Musical notation for the first system, treble clef. The melody consists of quarter and eighth notes, with some notes beamed together. The key signature has three flats (B-flat, E-flat, A-flat).

Hail Him! hail Him! high - est arch - an - gels in glo - ry;

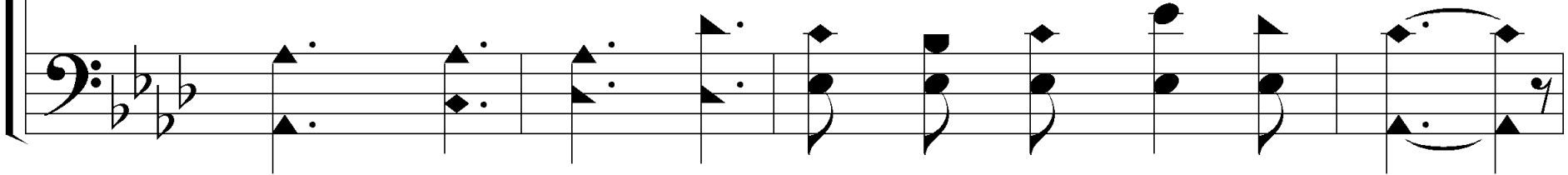


Musical notation for the first system, bass clef. The accompaniment features a steady eighth-note bass line and chords in the upper register.



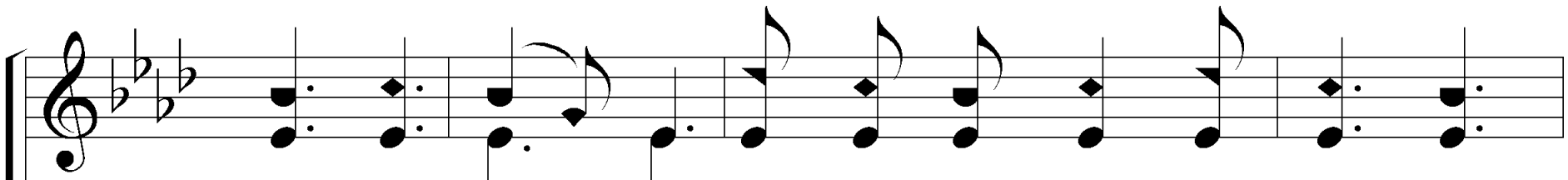
Musical notation for the second system, treble clef. The melody continues with quarter and eighth notes, ending with a final note and a fermata.

Strength and hon - or give to His ho - ly name!




Musical notation for the second system, bass clef. The accompaniment continues with a steady eighth-note bass line and chords, ending with a final note and a fermata.

# 1 – Praise Him! Praise Him!

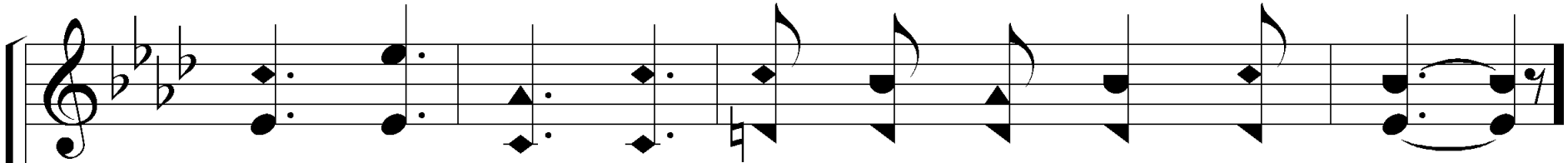


Musical notation for the first staff, treble clef, key signature of three flats, and common time signature.

Like a shep - herd, Je - sus will guard His child - ren;

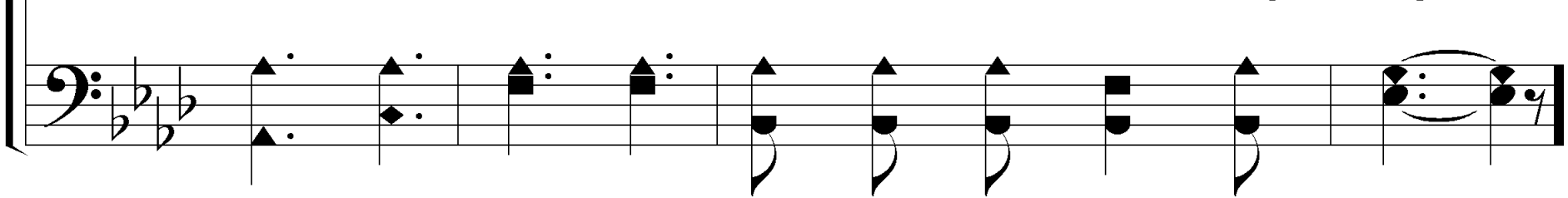


Musical notation for the second staff, bass clef, key signature of three flats, and common time signature.



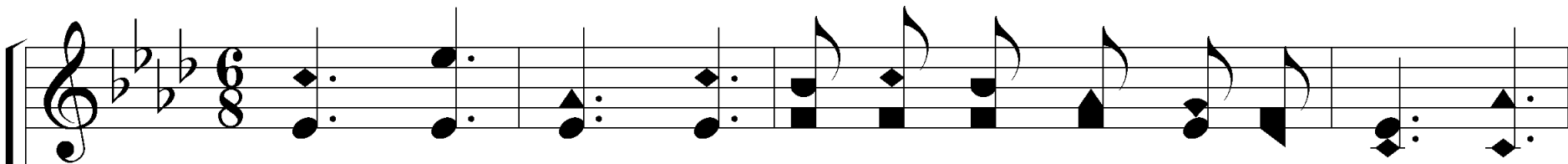
Musical notation for the third staff, treble clef, key signature of three flats, and common time signature.

In His arms He car - ries them all day long;

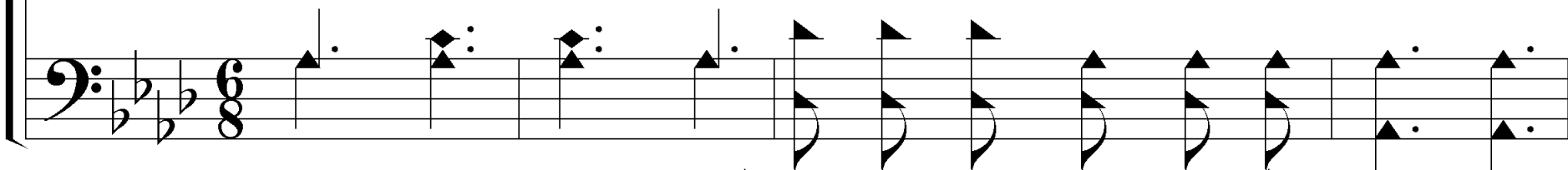


Musical notation for the fourth staff, bass clef, key signature of three flats, and common time signature.

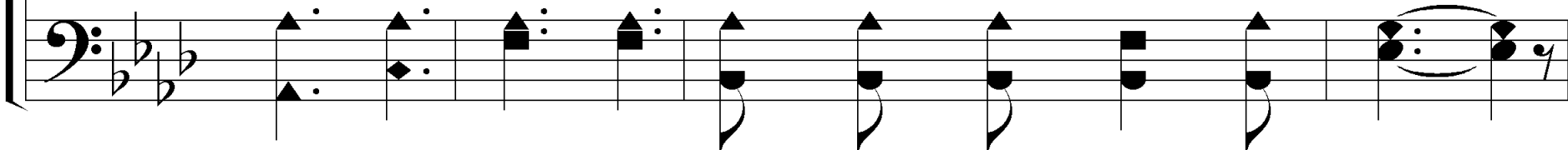
## 2 – Praise Him! Praise Him!



Praise Him! praise Him! Je-sus, our bless-ed Re-deem-er!



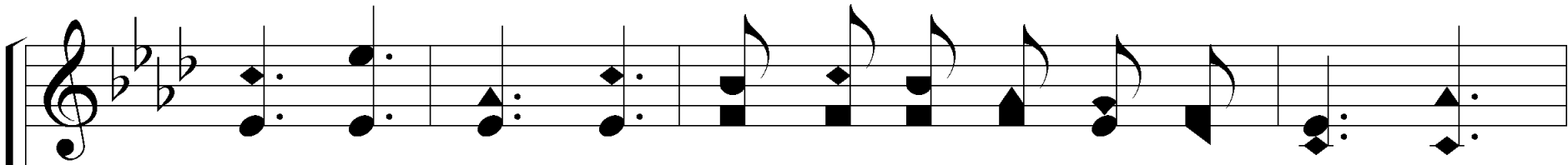
For our sins He suf-fered, and bled, and died;



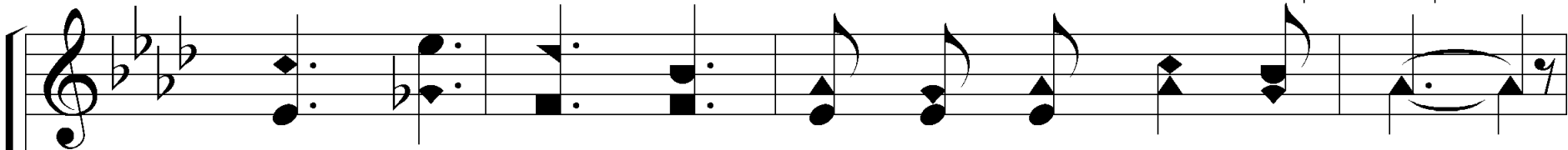
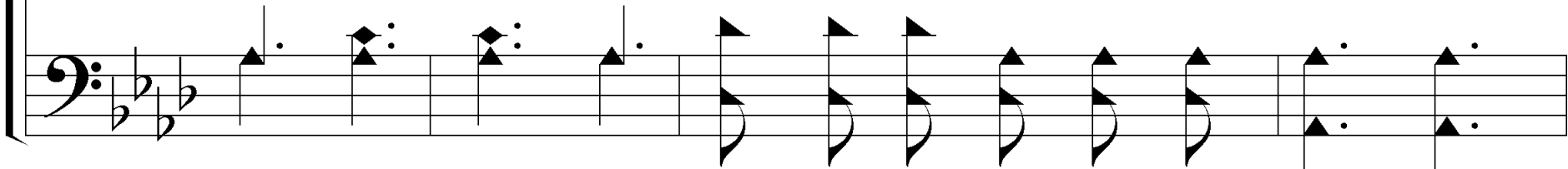
Words by: Fanny J. Crosby

Music by: Chester G. Allen

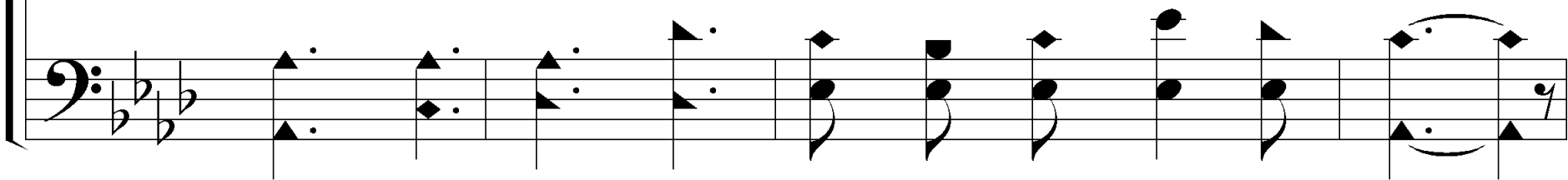
## 2 – Praise Him! Praise Him!



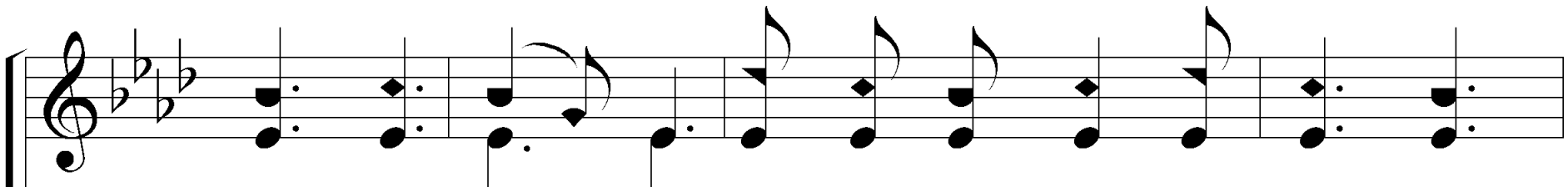
He, our Rock, our hope of e - ter - nal sal - va - tion;



Hail Him! hail Him! Je - sus the Cru - ci - fied!

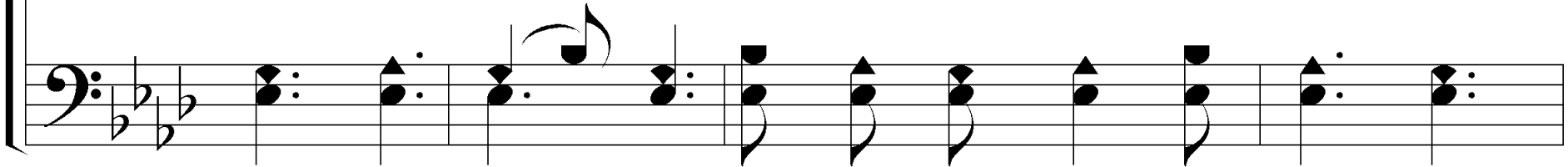


## 2 – Praise Him! Praise Him!

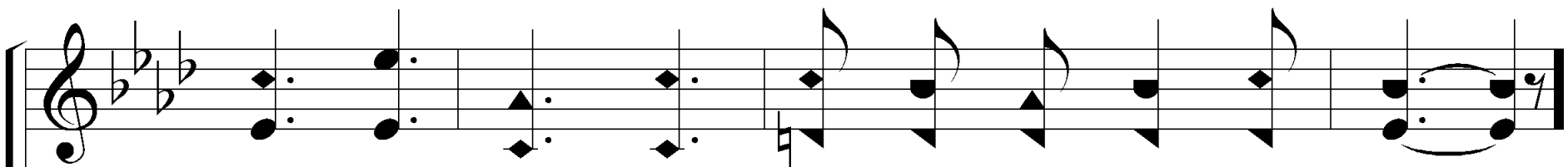


The first staff of music is written in treble clef with a key signature of three flats (B-flat, E-flat, A-flat) and a common time signature. It contains a series of chords and single notes, including dotted half notes and quarter notes.

Sound His prais - es! Je - sus, who bore our sor - rows,

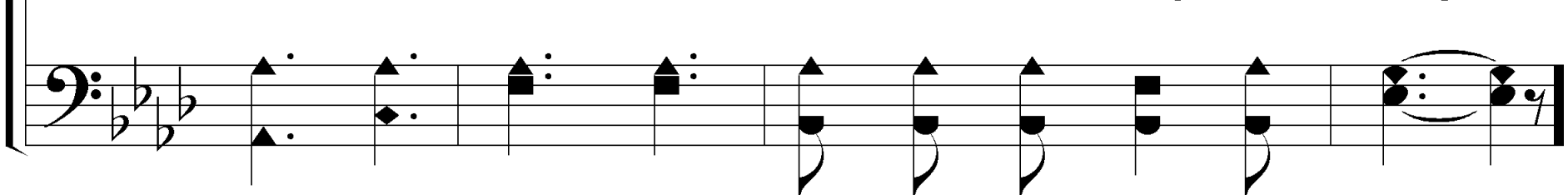


The second staff of music is written in bass clef with a key signature of three flats and a common time signature. It features a bass line with dotted half notes and quarter notes, providing harmonic support for the vocal line above.



The third staff of music is written in treble clef with a key signature of three flats and a common time signature. It continues the vocal melody with dotted half notes and quarter notes, ending with a final chord.

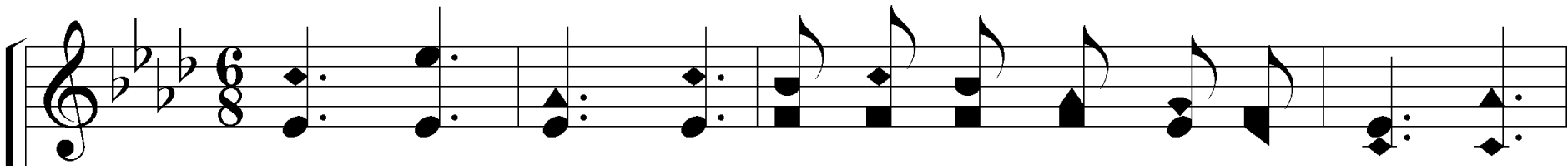
Love un - bound - ed won - der - ful, deep and strong:



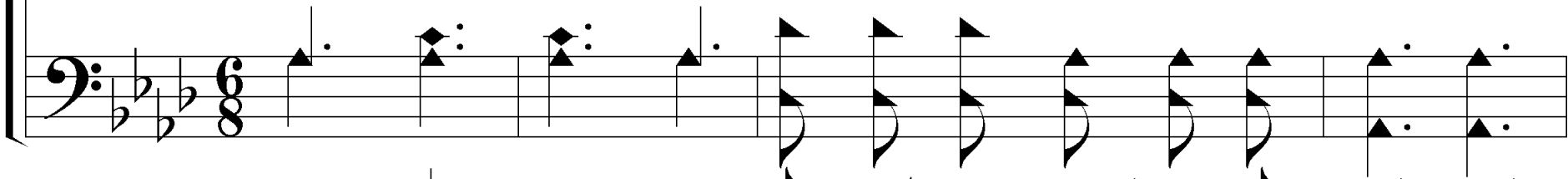
The fourth staff of music is written in bass clef with a key signature of three flats and a common time signature. It provides a bass line for the final phrase, featuring dotted half notes and quarter notes.



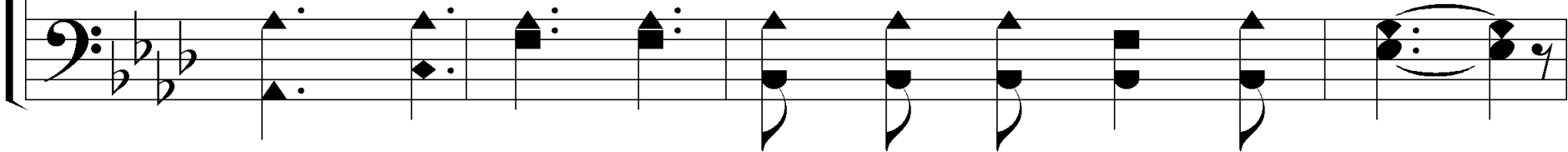
# 3 – Praise Him! Praise Him!



**Praise Him! praise Him! Je-sus, our bless-ed Re-deem-er!**



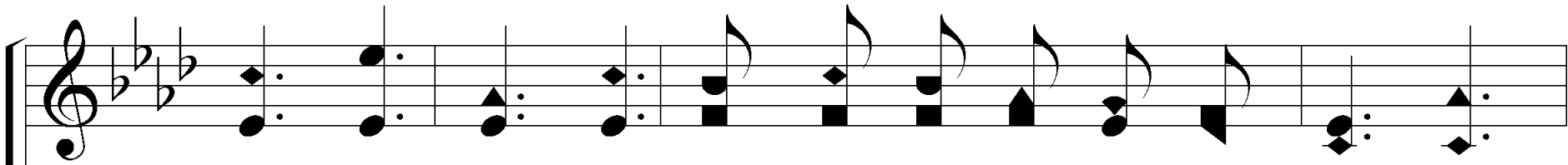
**Heav'n - ly por - tals loud with ho - san - nas ring!**



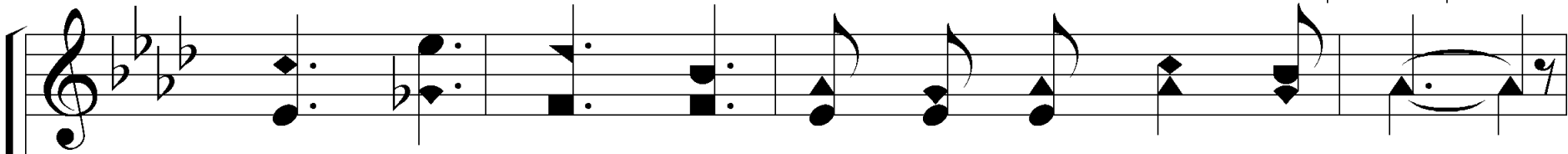
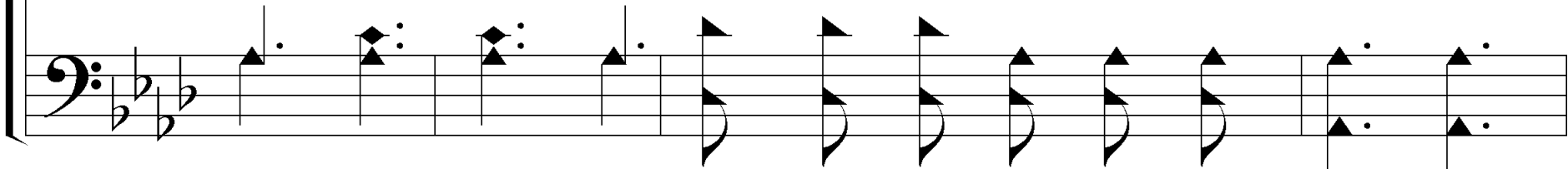
Words by: Fanny J. Crosby

Music by: Chester G. Allen

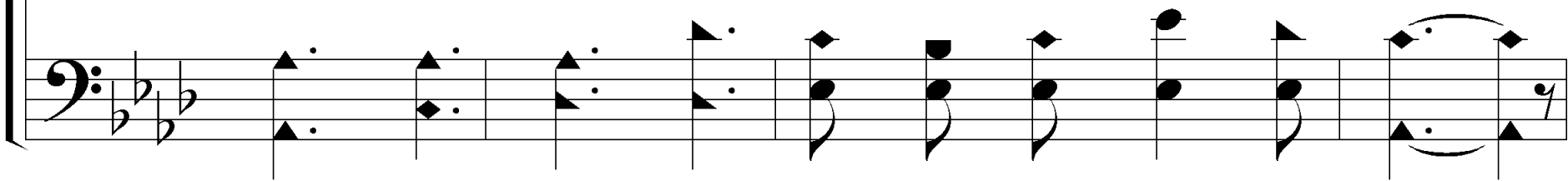
# 3 – Praise Him! Praise Him!



Je - sus, Sav - ior, reign - eth for ev - er and ev - er;



Crown Him! crown Him! Pro-phet, and Priest, and King!



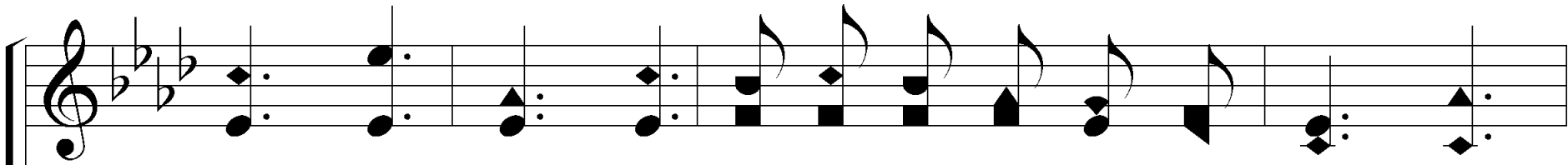
# 3 – Praise Him! Praise Him!

Christ is com - ing! o - ver the world vic - to - rious,

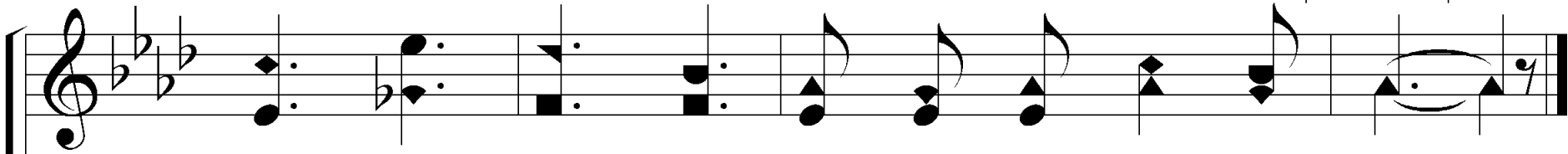
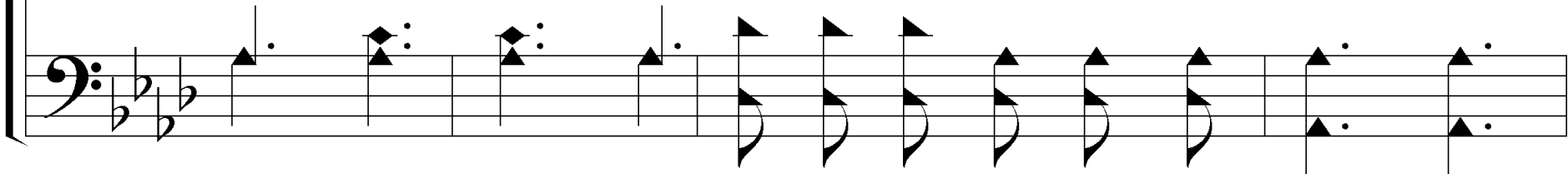
Pow'r and glo - ry un - to the Lord be - long:

The image shows a musical score for a hymn. It consists of two systems of music. Each system has a vocal line (treble clef) and a piano accompaniment line (bass clef). The key signature is three flats (B-flat, E-flat, A-flat), and the time signature is 4/4. The lyrics are: 'Christ is coming! over the world victorious, Pow'r and glory unto the Lord belong:'. The first system ends with a comma, and the second system ends with a colon. The piano accompaniment features a steady bass line with chords and some melodic movement.

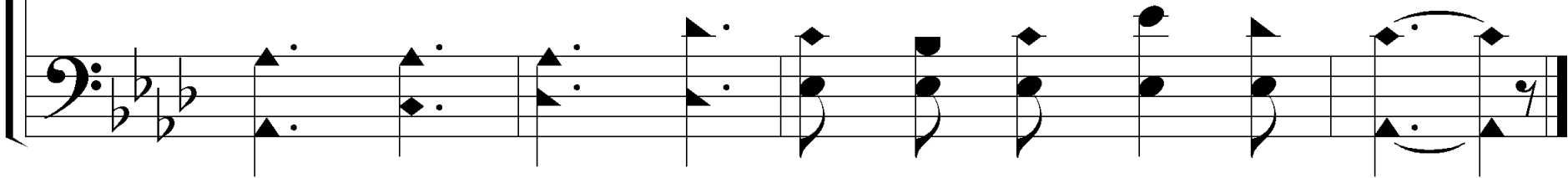
# c – Praise Him! Praise Him!



**Praise Him! praise Him! tell of His ex - cel - lent great - ness;**



**Praise Him! praise Him! ev - er in joy - ful song!**



# Praise Him, Praise Him!

- Key: A flat
- First Note: C
- Arpagio: A flat, C, E flat
- Metre: *Irregular*
- Time: 6/8
- Beat: 2

**Praise Him, Praise Him!**

