

The Gospel is For All

SACRED SELECTIONS #555

ACTS 16:6-10



Author and Composer

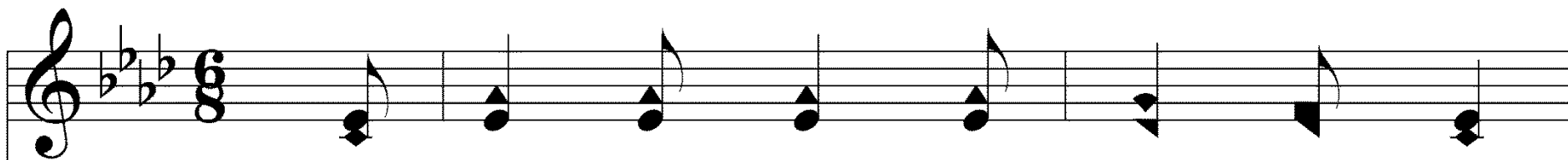
J. M. McCaleb

- ▶ No Information Available
- ▶ May be a member of the Lord's Church

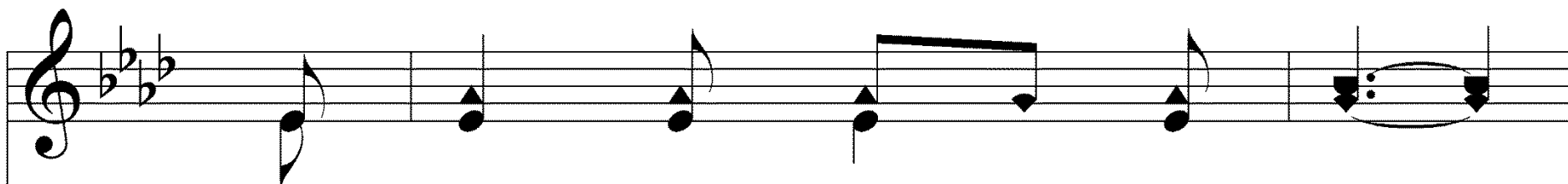
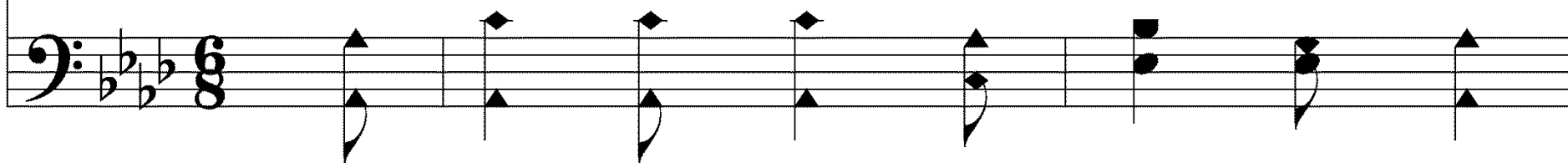
R. M. McIntosh



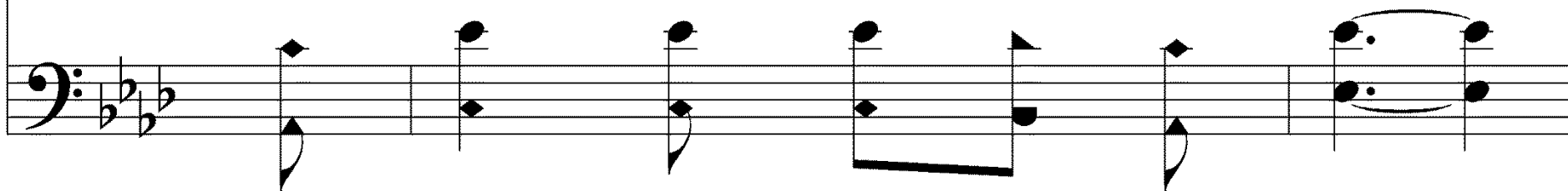
The Gospel Is For All

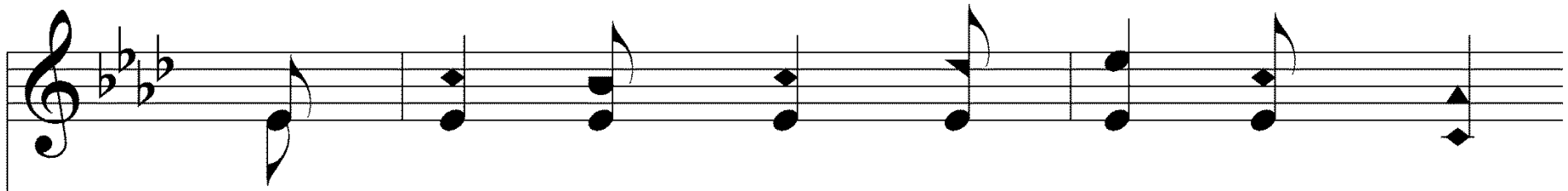


1. Of one the Lord has made the race,

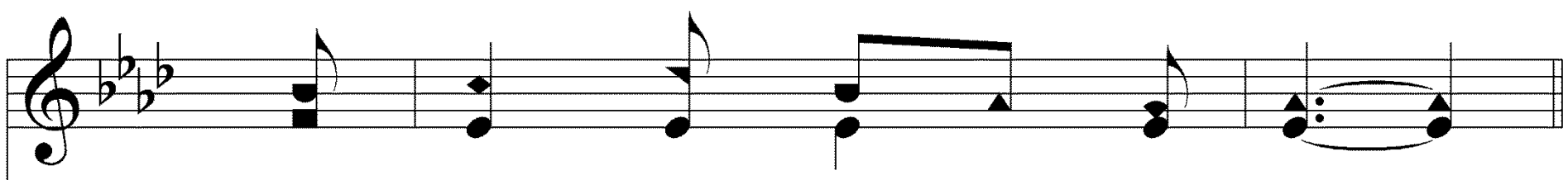
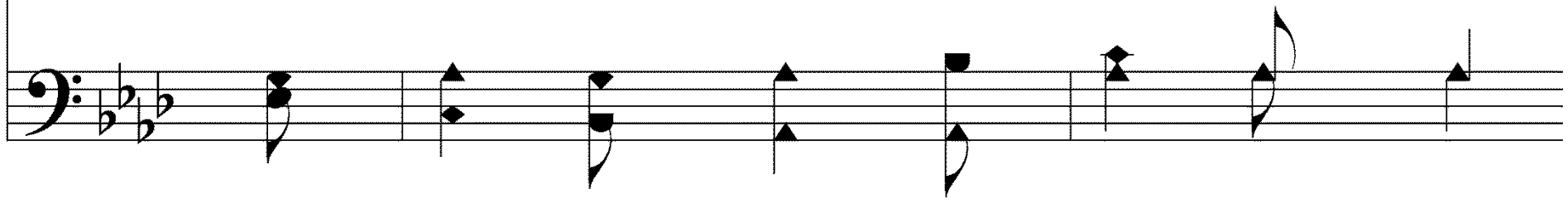


Thru one has come the fall;

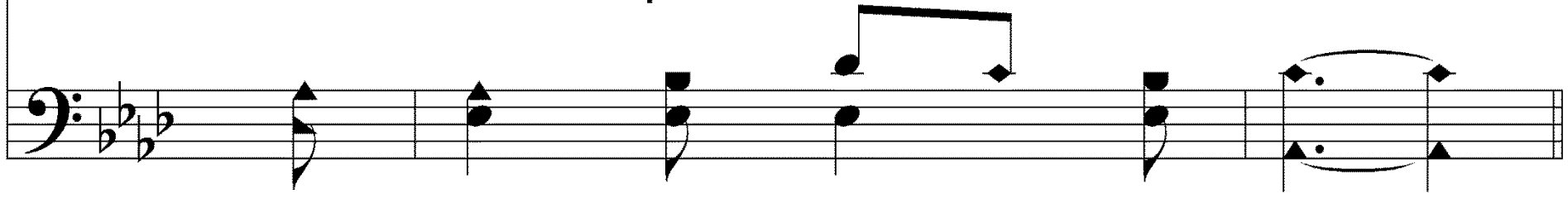


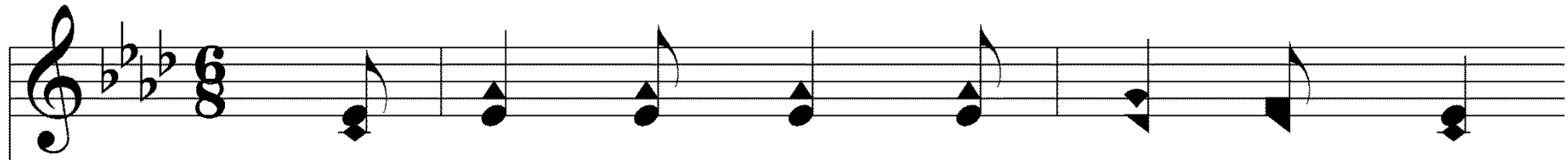


Where sin has gone must go His grace;

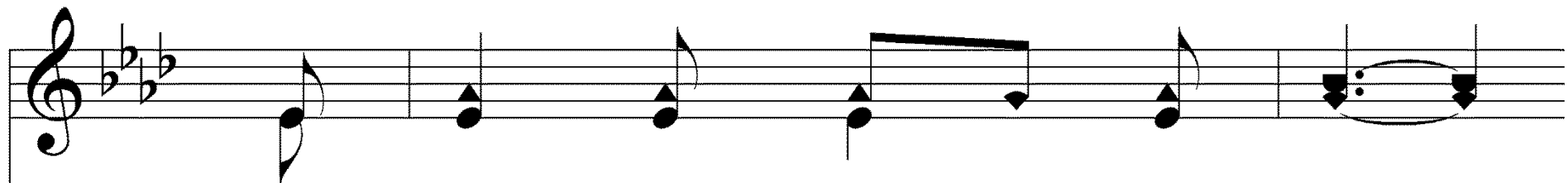
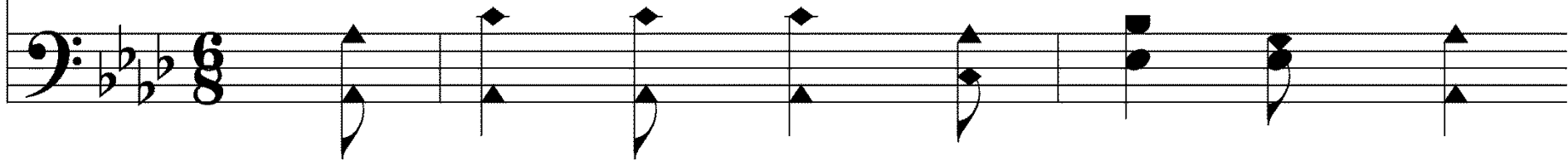


The Gos - pel is for all.

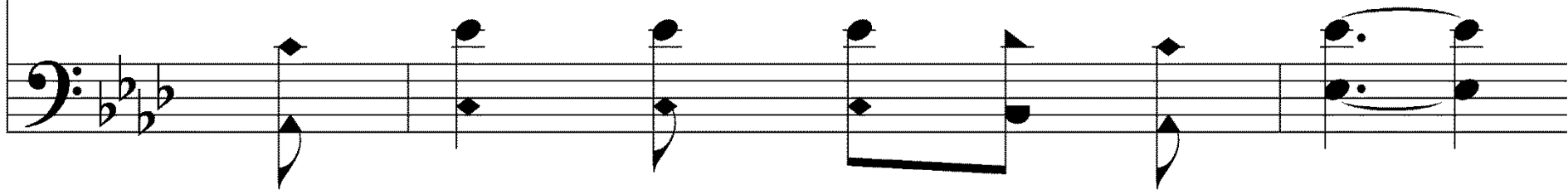




2. Say not the hea - then are at home,

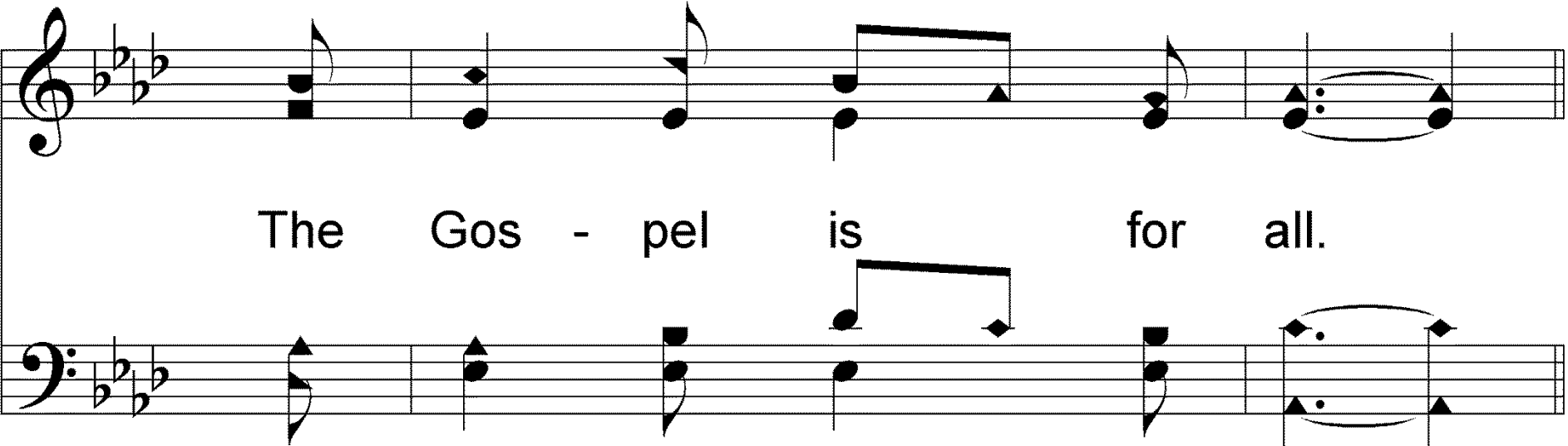


Be - yond we have no call,

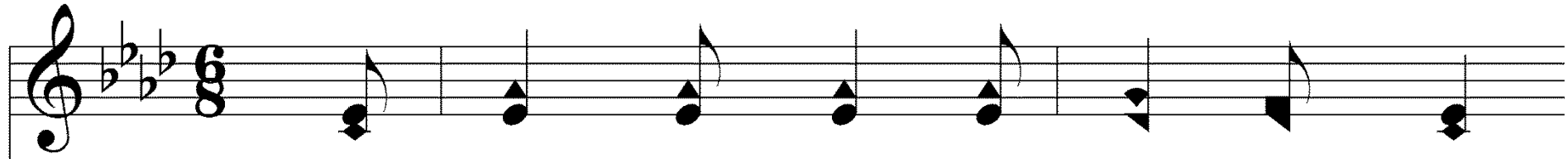




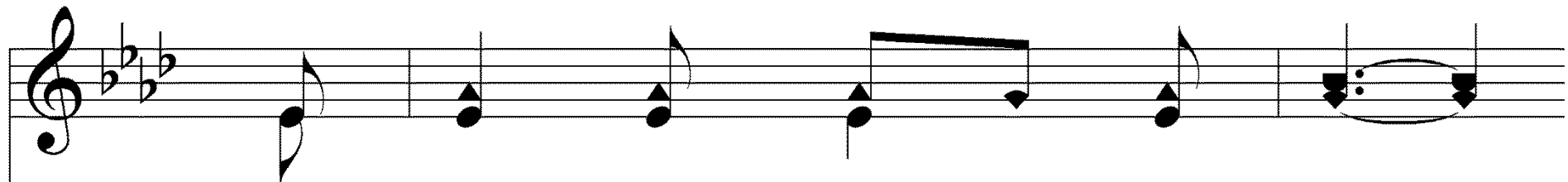
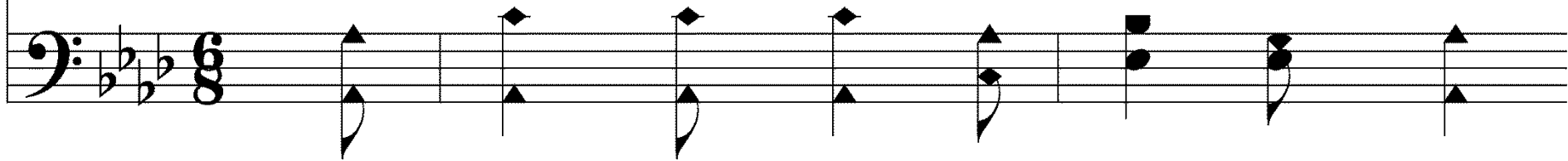
For why should we be blest a - lone?



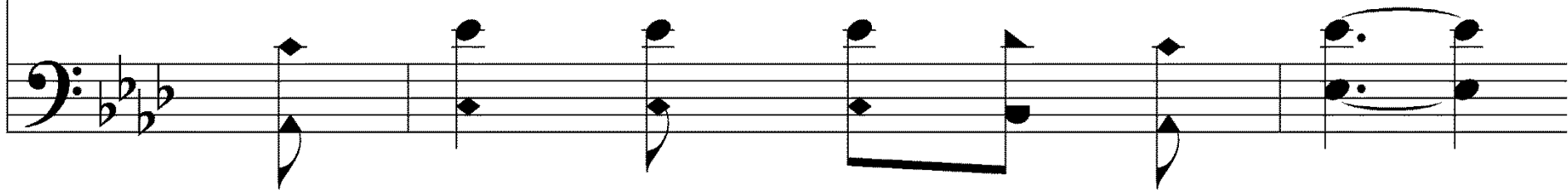
The Gos - pel is for all.

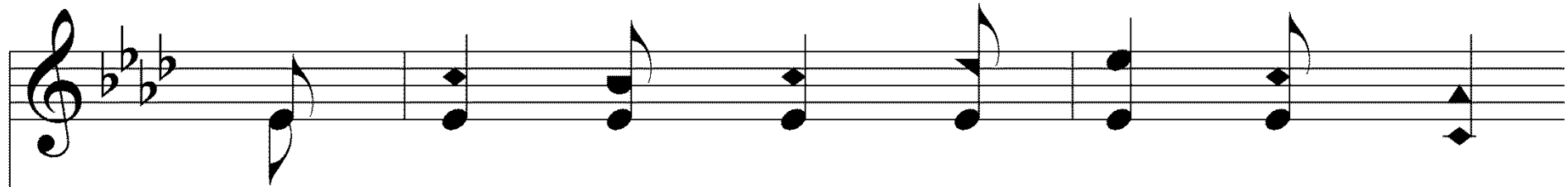


3. Re - ceived ye free - ly, free - ly give,

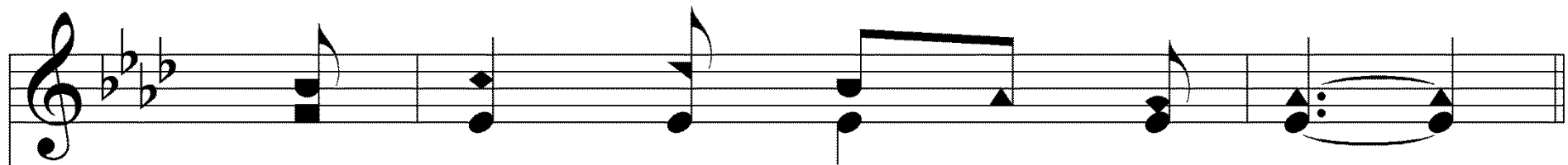
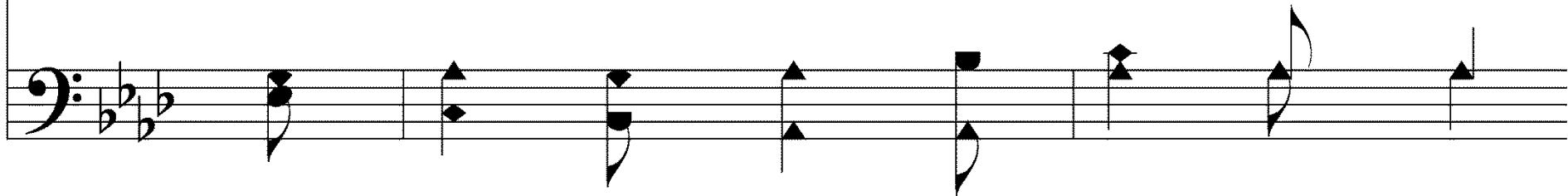


From ev - 'ry land they call;

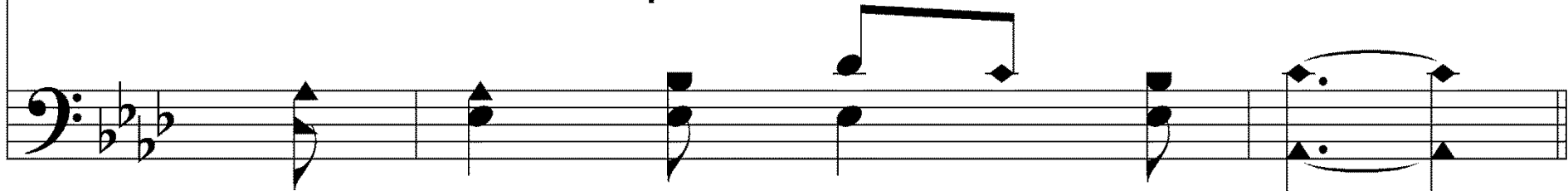




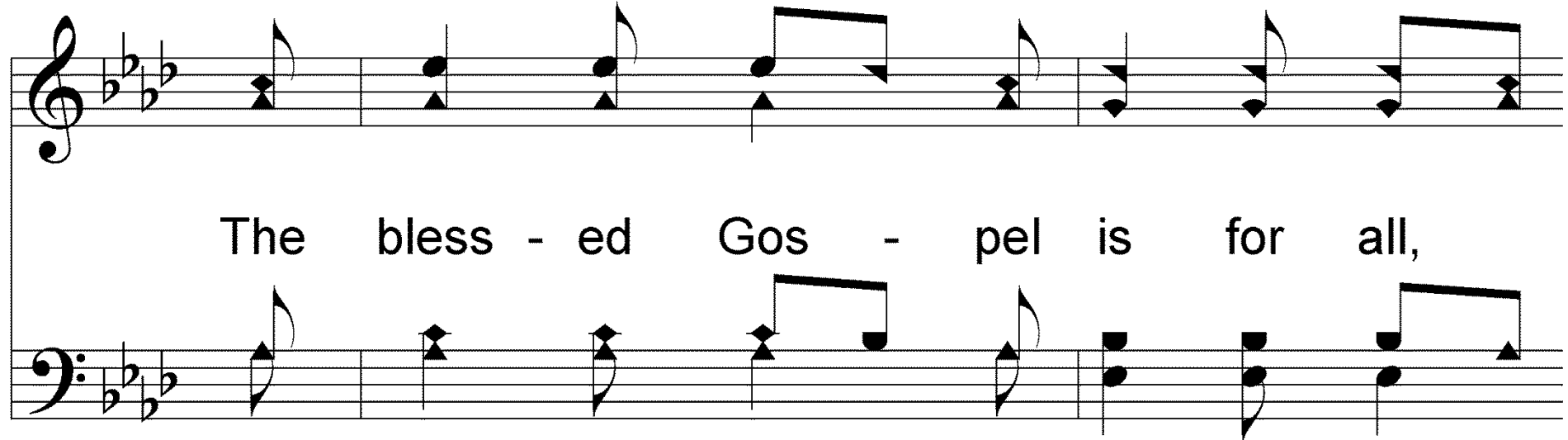
Un - less they hear they can - not live:



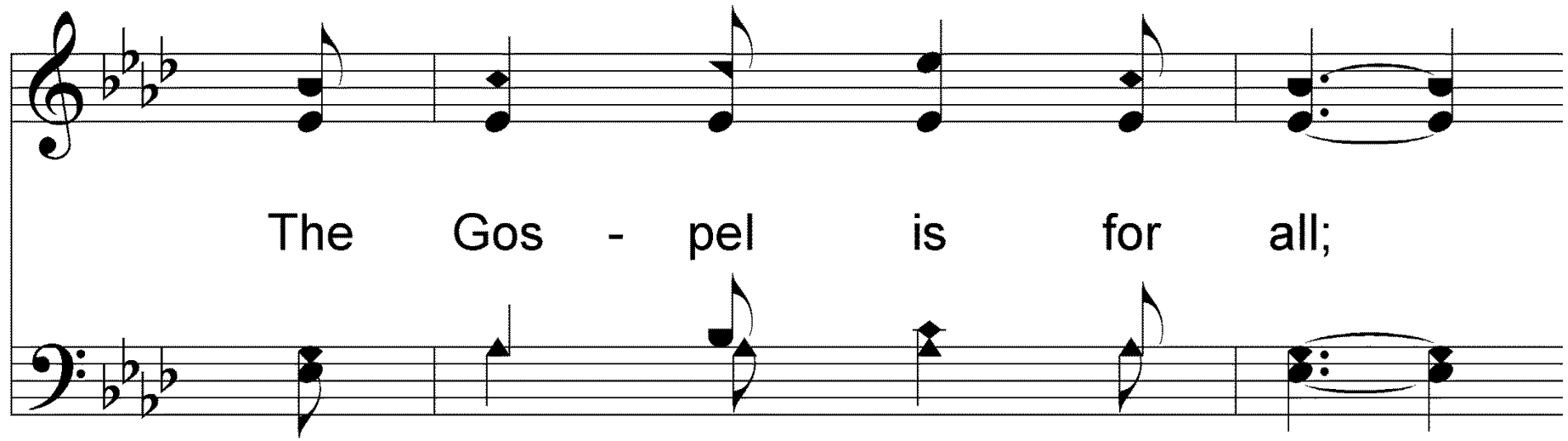
The Gos - pel is for all.



Chorus



The bless - ed Gos - pel is for all,



The Gos - pel is for all;

Where sin has gone must go His grace;

The Gos - pel is for all.

The Gospel is For All

SACRED SELECTIONS #555

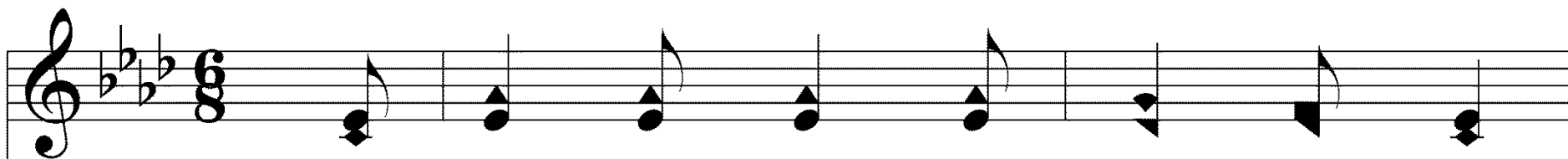
ACTS 16:6-10



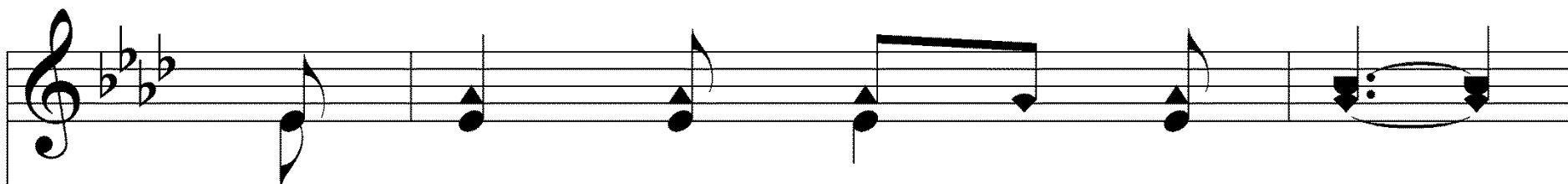
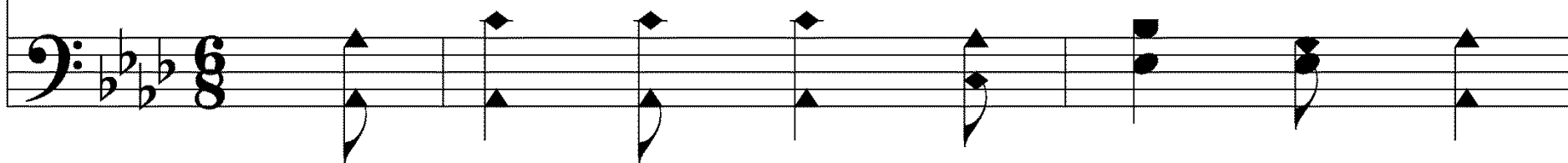
The Gospel is For All

- ▶ Key: A flat
- ▶ Scale: Ab, Bb, C, Db, Eb, F, G
- ▶ Arpeggio: Ab, C, Eb, G
- ▶ Time: 6/8
- ▶ Beat: 2, or 3
- ▶ Metre: 8:6:8:6

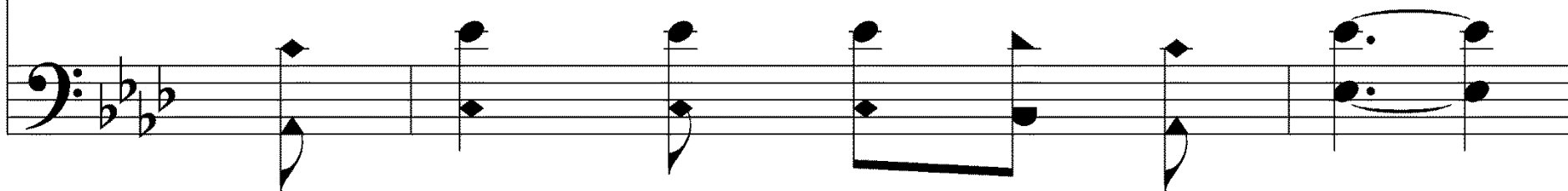
The Gospel Is For All

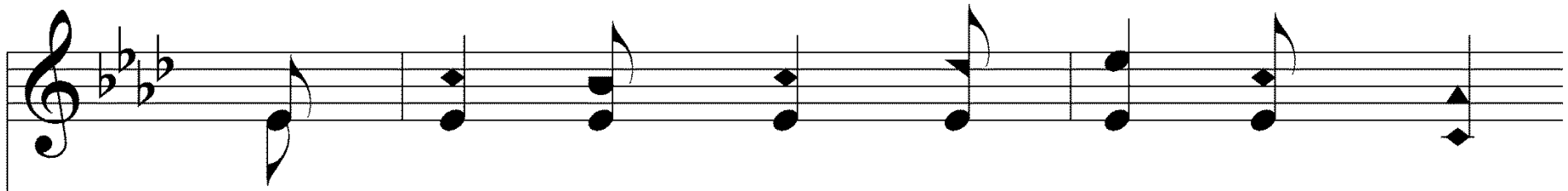


1. Of one the Lord has made the race,

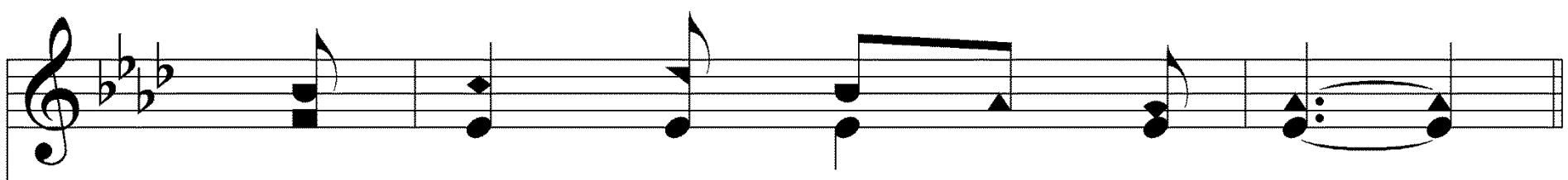
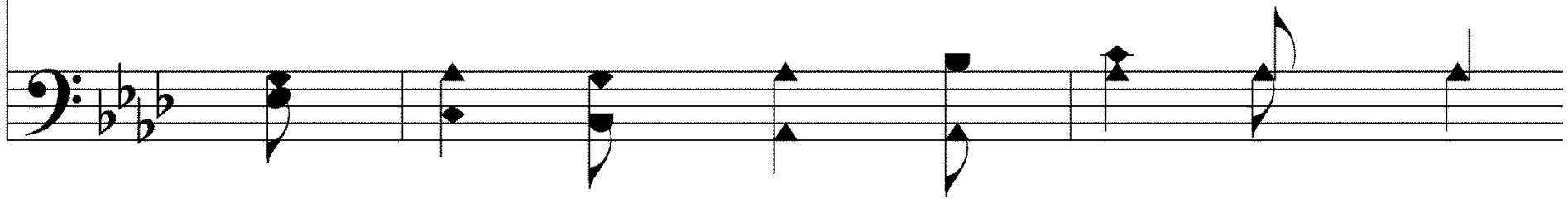


Thru one has come the fall;

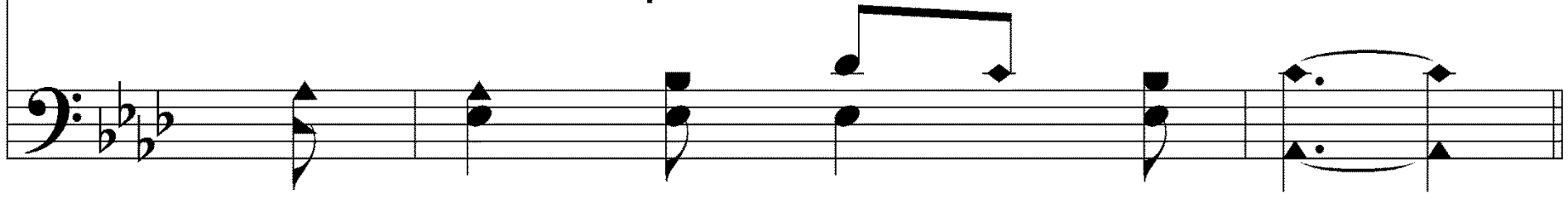




Where sin has gone must go His grace;



The Gos - pel is for all.



Chorus

The first staff of the chorus is written in treble clef, G major (one flat), and 4/4 time. It contains eight measures of music. The notes are: G4 (quarter), A4 (quarter), B4 (quarter), C5 (quarter), B4-A4 (beamed eighth notes), G4 (quarter), F#4 (quarter), and E4 (quarter).

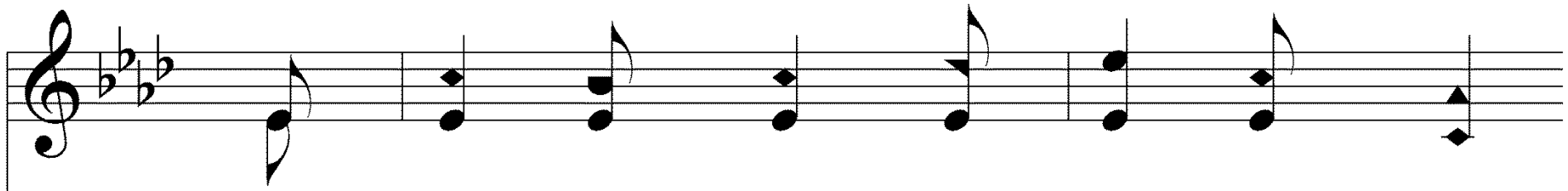
The bless - ed Gos - pel is for all,

The second staff of the chorus is written in bass clef, G major (one flat), and 4/4 time. It contains eight measures of music. The notes are: G3 (quarter), A3 (quarter), B3 (quarter), C4 (quarter), B3-A3 (beamed eighth notes), G3 (quarter), F#3 (quarter), and E3 (quarter).

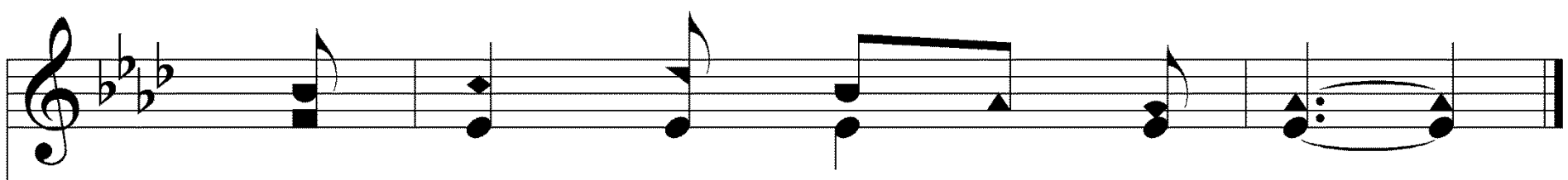
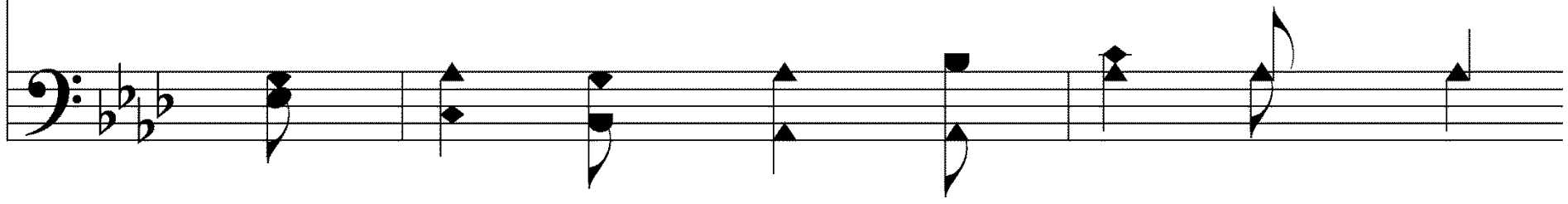
The third staff of the chorus is written in treble clef, G major (one flat), and 4/4 time. It contains six measures of music. The notes are: G4 (quarter), A4 (quarter), B4 (quarter), C5 (quarter), B4-A4 (beamed eighth notes), and a final G4 (quarter) with a fermata.

The Gos - pel is for all;

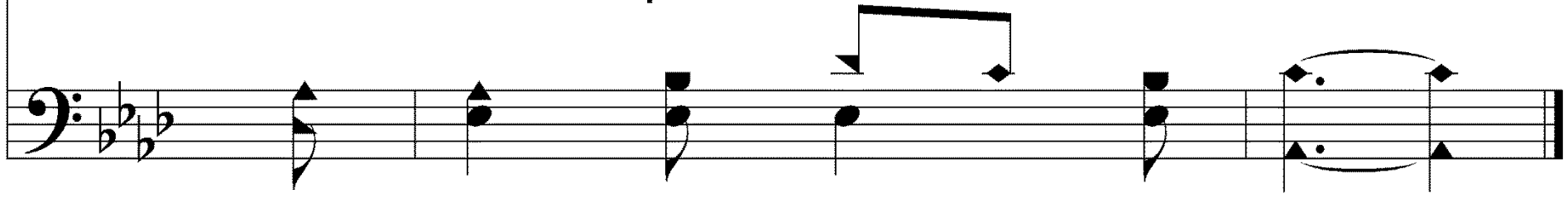
The fourth staff of the chorus is written in bass clef, G major (one flat), and 4/4 time. It contains six measures of music. The notes are: G3 (quarter), A3 (quarter), B3 (quarter), C4 (quarter), B3-A3 (beamed eighth notes), and a final G3 (quarter) with a fermata.

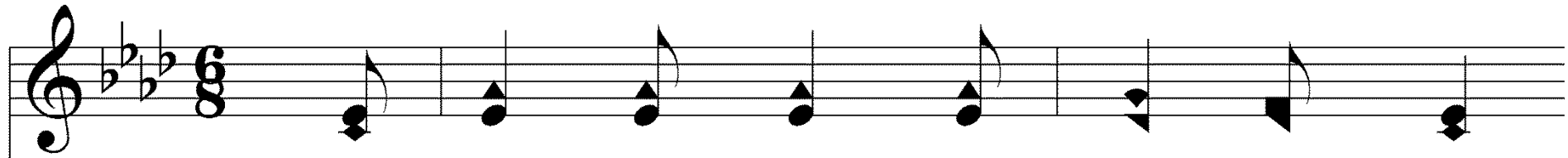


Where sin has gone must go His grace;

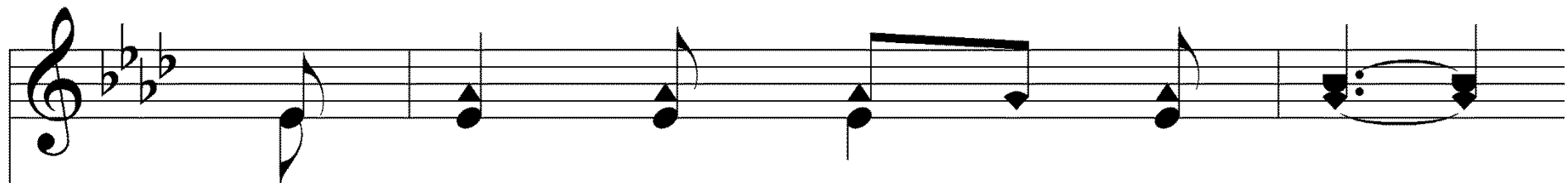
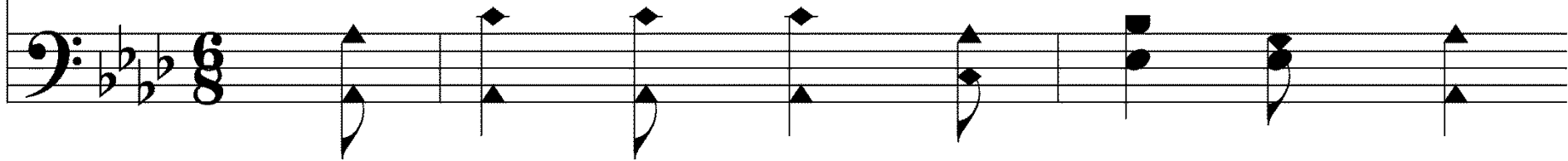


The Gos - pel is for all.

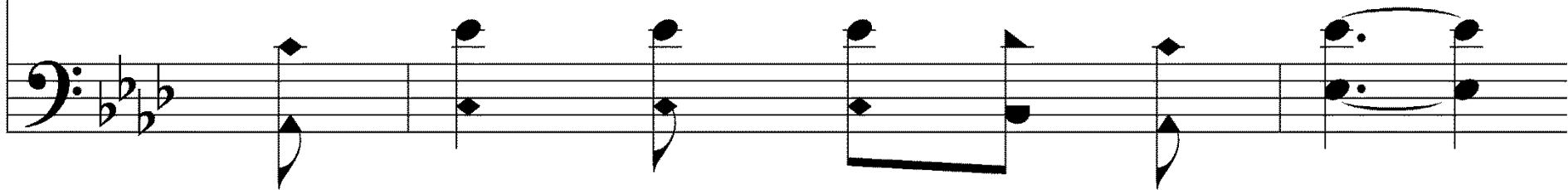




2. Say not the hea - then are at home,

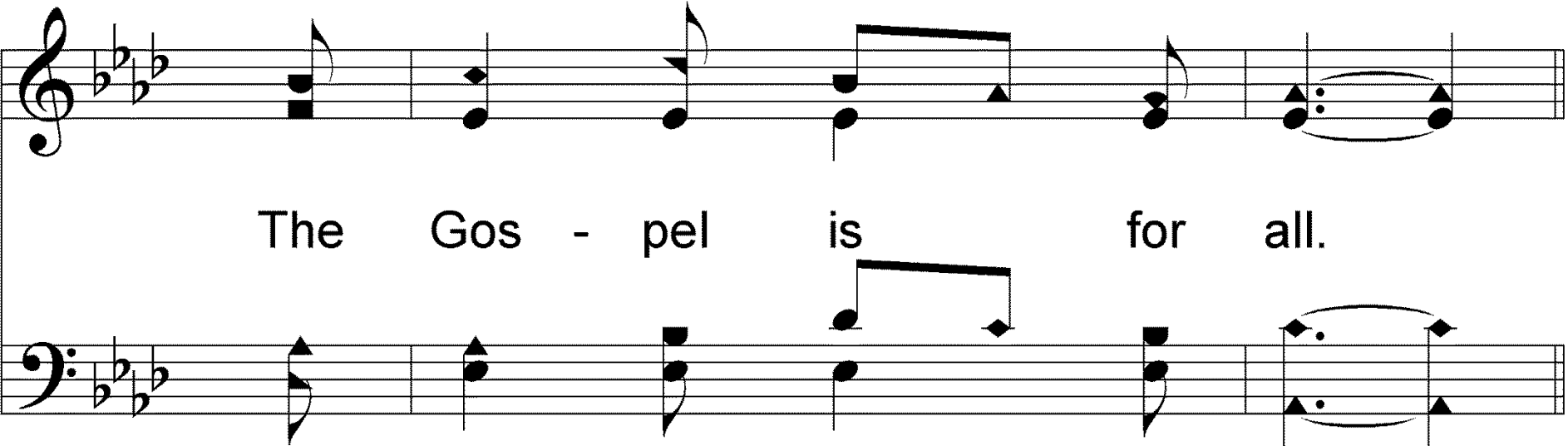


Be - yond we have no call,





For why should we be blest a - lone?



The Gos - pel is for all.

Chorus

The first staff of music is in treble clef, G major, and 4/4 time. It contains the first four measures of the chorus melody. The notes are: G4 (quarter), A4 (quarter), B4 (quarter), C5 (quarter), B4 (quarter), A4 (quarter), G4 (quarter), and F#4 (quarter).

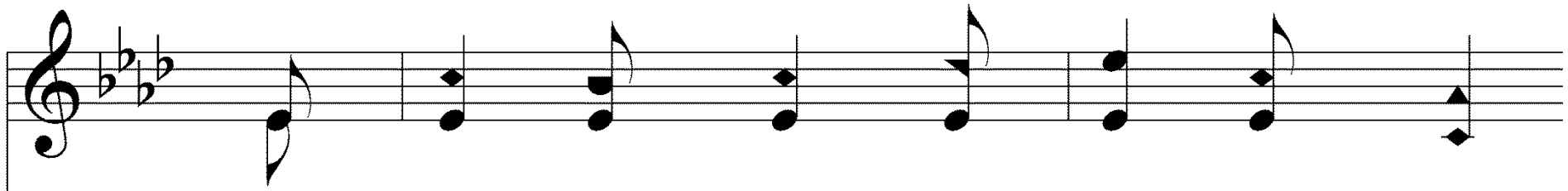
The bless - ed Gos - pel is for all,

The second staff of music is in bass clef, G major, and 4/4 time. It contains the first four measures of the chorus bass line. The notes are: G3 (quarter), A3 (quarter), B3 (quarter), C4 (quarter), B3 (quarter), A3 (quarter), G3 (quarter), and F#3 (quarter).

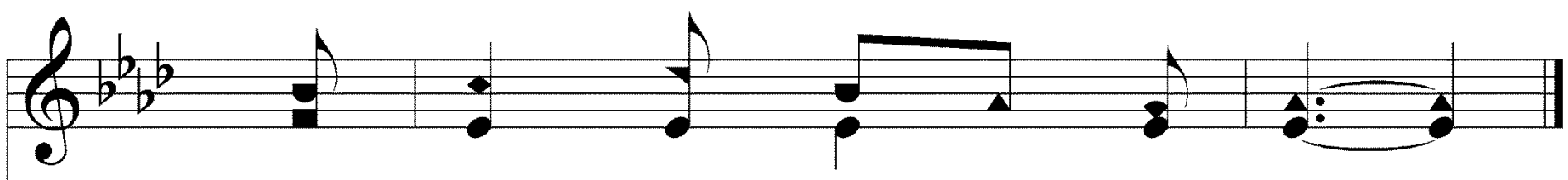
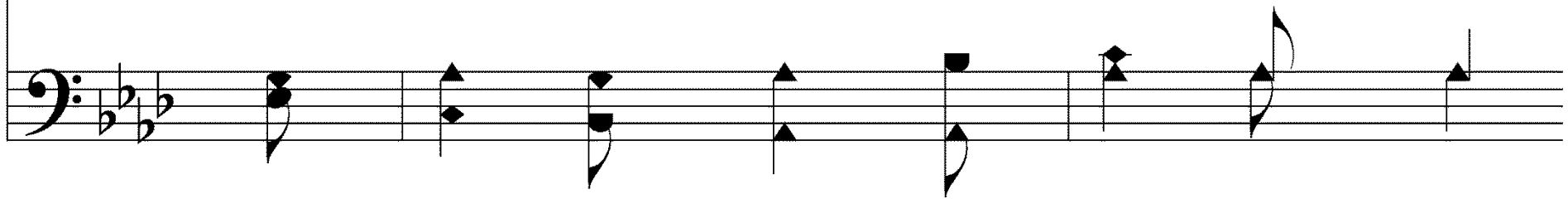
The third staff of music is in treble clef, G major, and 4/4 time. It contains the fifth and sixth measures of the chorus melody. The notes are: G4 (quarter), A4 (quarter), B4 (quarter), C5 (quarter), B4 (quarter), and A4 (quarter).

The Gos - pel is for all;

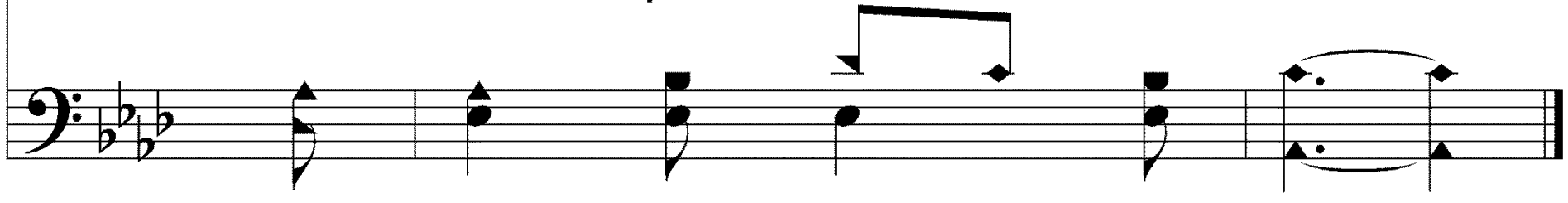
The fourth staff of music is in bass clef, G major, and 4/4 time. It contains the fifth and sixth measures of the chorus bass line. The notes are: G3 (quarter), A3 (quarter), B3 (quarter), C4 (quarter), B3 (quarter), and A3 (quarter).

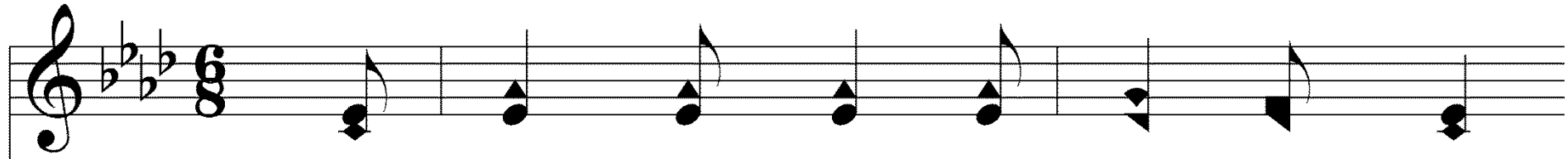


Where sin has gone must go His grace;

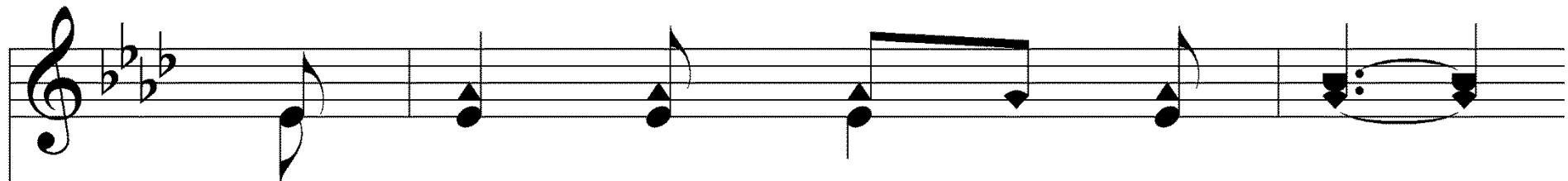
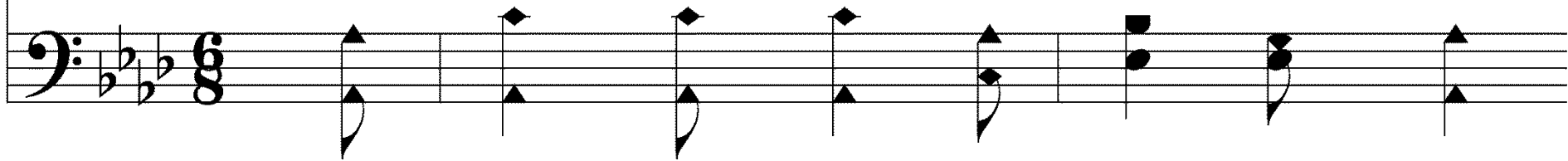


The Gos - pel is for all.

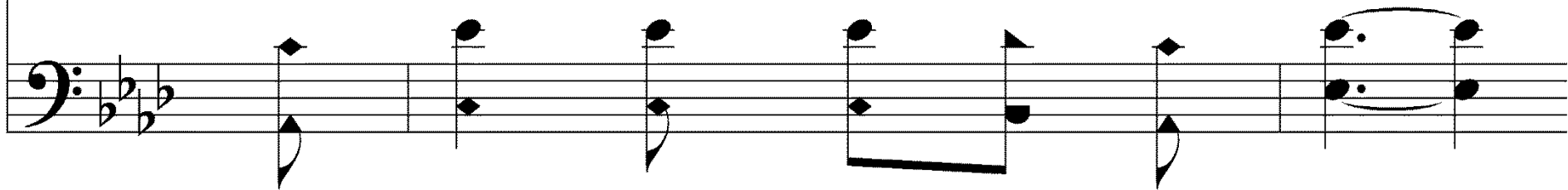


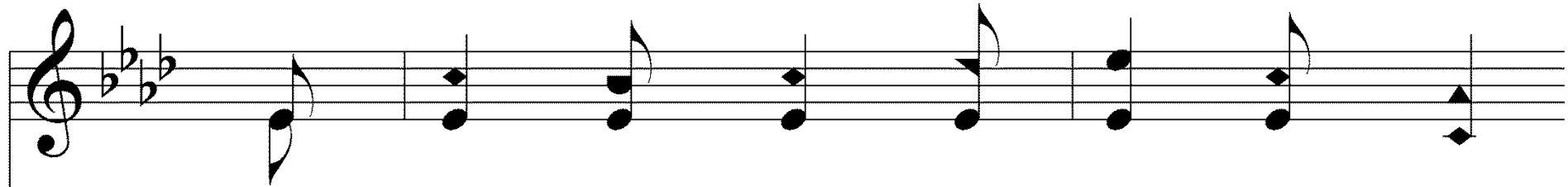


3. Re - ceived ye free - ly, free - ly give,

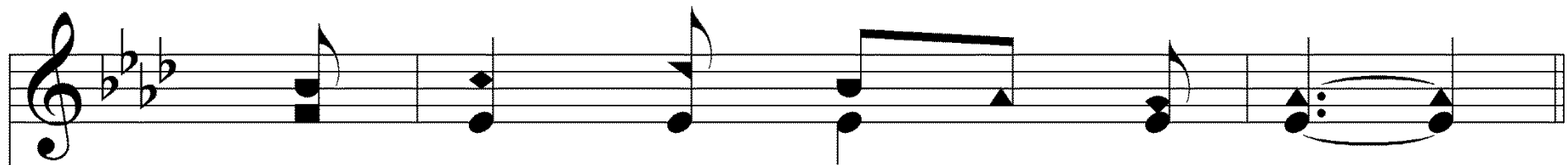
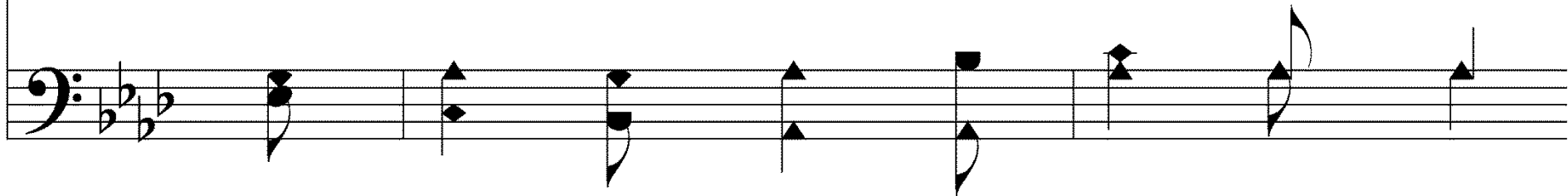


From ev - 'ry land they call;

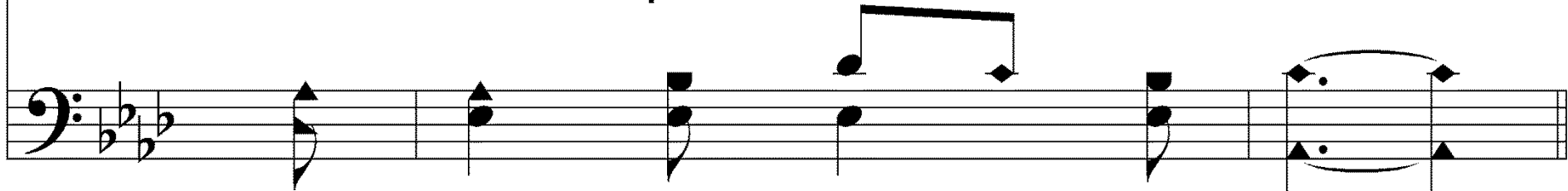




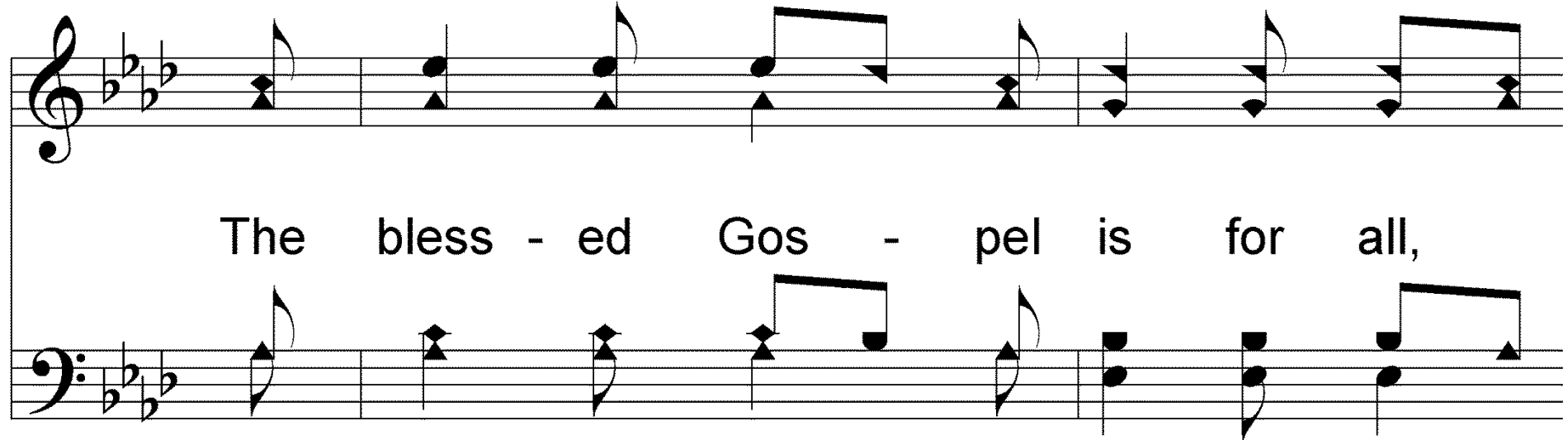
Un - less they hear they can - not live:



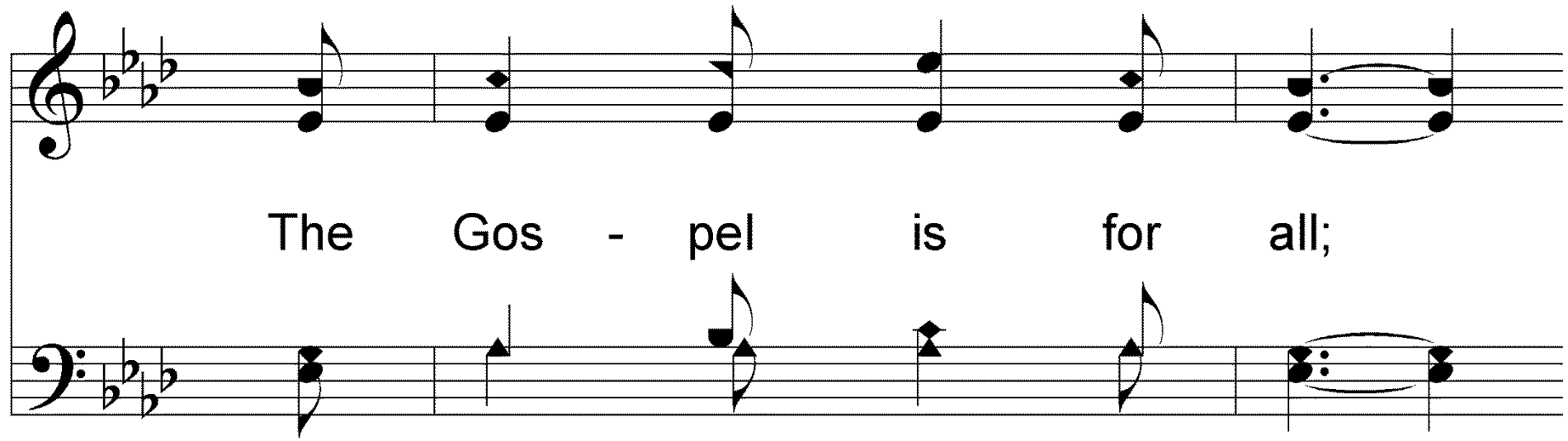
The Gos - pel is for all.



Chorus



The bless - ed Gos - pel is for all,



The Gos - pel is for all;

Where sin has gone must go His grace;

The Gos - pel is for all.

The Gospel is For All

SACRED SELECTIONS #555

ACTS 16:6-10

